

# UBE2E1 antibody - middle region

Rabbit Polyclonal Antibody

Catalog # AI12204

## Product Information

|                   |  |
|-------------------|--|
| Application       | WB   |
| Primary Accession | <a href="#">P51965</a>   |
| Other Accession   | <a href="#">NM_003341</a> , <a href="#">NP_003332</a>                |
| Reactivity        | Human, Mouse, Rat, Rabbit, Zebrafish, Dog, Guinea Pig, Horse, Bovine |
| Predicted         | Human, Mouse, Zebrafish, Pig, Dog, Bovine                            |
| Host              | Rabbit   |
| Clonality         | Polyclonal   |
| Calculated MW     | 21404  |

## Additional Information

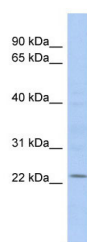
|                          |   |
|--------------------------|---|
| Gene ID                  | 7324  |
| Alias Symbol             | UBCH6   |
| Other Names              | Ubiquitin-conjugating enzyme E2 E1, 6.3.2.19, UbcH6, Ubiquitin carrier protein E1, Ubiquitin-protein ligase E1, UBE2E1, UBCH6   |
| Format                   | Liquid. Purified antibody supplied in 1x PBS buffer with 0.09% (w/v) sodium azide and 2% sucrose.   |
| Reconstitution & Storage | Add 50 ul of distilled water. Final anti-UBE2E1 antibody concentration is 1 mg/ml in PBS buffer with 2% sucrose. For longer periods of storage, store at 20°C. Avoid repeat freeze-thaw cycles. |
| Precautions              | UBE2E1 antibody - middle region is for research use only and not for use in diagnostic or therapeutic procedures.   |

## Protein Information

|                   |   |
|-------------------|---|
| Name              | UBE2E1 ( <a href="#">HGNC:12477</a> )   |
| Synonyms          | UBCH6   |
| Function          | Accepts ubiquitin from the E1 complex and catalyzes its covalent attachment to other proteins. Catalyzes the covalent attachment of ISG15 to other proteins. Mediates the selective degradation of short-lived and abnormal proteins. In vitro also catalyzes 'Lys-48'-linked polyubiquitination. Catalyzes monoubiquitination of other proteins in both an E3-dependent and E3-independent manner (PubMed: <a href="#">27237050</a> ). |
| Cellular Location | Nucleus.  |

## Images

---



WB Suggested Anti-UBE2E1 Antibody Titration: 0.2-1  
µg/ml  
ELISA Titer: 1:312500  
Positive Control: COLO205 cell lysate

Please note: All products are 'FOR RESEARCH USE ONLY. NOT FOR USE IN DIAGNOSTIC OR THERAPEUTIC PROCEDURES'.