

EPB41 antibody - N-terminal region

Rabbit Polyclonal Antibody

Catalog # AI12146

Product Information

Application	WB
Primary Accession	P11171
Other Accession	NM_203343 , NP_976218
Reactivity	Human, Mouse, Rat, Rabbit, Pig, Dog, Guinea Pig, Horse, Bovine
Predicted	Human, Rabbit, Dog, Horse
Host	Rabbit
Clonality	Polyclonal
Calculated MW	97017

Additional Information

Gene ID	2035
Alias Symbol	4.1R, EL1, HE
Other Names	Protein 4.1, P4.1, 4.1R, Band 4.1, EPB4.1, EPB41, E41P
Format	Liquid. Purified antibody supplied in 1x PBS buffer with 0.09% (w/v) sodium azide and 2% sucrose.
Reconstitution & Storage	Add 50 ul of distilled water. Final anti-EPB41 antibody concentration is 1 mg/ml in PBS buffer with 2% sucrose. For longer periods of storage, store at 20°C. Avoid repeat freeze-thaw cycles.
Precautions	EPB41 antibody - N-terminal region is for research use only and not for use in diagnostic or therapeutic procedures.

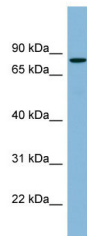
Protein Information

Name	EPB41 (HGNC:3377)
Synonyms	E41P
Function	Protein 4.1 is a major structural element of the erythrocyte membrane skeleton. It plays a key role in regulating membrane physical properties of mechanical stability and deformability by stabilizing spectrin-actin interaction. Recruits DLG1 to membranes. Required for dynein-dynactin complex and NUMA1 recruitment at the mitotic cell cortex during anaphase (PubMed: 23870127).
Cellular Location	Cytoplasm, cytoskeleton. Cytoplasm, cell cortex. Nucleus

References

Krauss, S.W., (2008) Mol. Cell. Biol. 28(7), 2283-2294 Reconstitution and Storage: For short term use, store at 2-8°C up to 1 week. For long term storage, store at -20°C in small aliquots to prevent freeze-thaw cycles.

Images



WB Suggested Anti-EPB41 Antibody Titration: 0.2-1 µg/ml
Positive Control: Human Spleen

Please note: All products are 'FOR RESEARCH USE ONLY. NOT FOR USE IN DIAGNOSTIC OR THERAPEUTIC PROCEDURES'.