

# TRABD antibody - middle region

Rabbit Polyclonal Antibody  
Catalog # AI12133

## Product Information

---

<b>Application</b>	WB
<b>Primary Accession</b>	<a href="#">Q9H4I3</a>
<b>Other Accession</b>	<a href="#">NM_025204</a> , <a href="#">NP_079480</a>
<b>Reactivity</b>	Human, Mouse, Rat, Zebrafish, Pig, Dog, Guinea Pig, Horse, Bovine
<b>Predicted</b>	Human, Mouse, Rat, Zebrafish, Chicken, Dog, Guinea Pig, Horse
<b>Host</b>	Rabbit
<b>Clonality</b>	Polyclonal
<b>Calculated MW</b>	42321

## Additional Information

---

<b>Gene ID</b>	80305
<b>Alias Symbol</b>	LP6054, MGC110928, PP2447
<b>Other Names</b>	TraB domain-containing protein, Protein TTG2, TRABD, TTG2
<b>Format</b>	Liquid. Purified antibody supplied in 1x PBS buffer with 0.09% (w/v) sodium azide and 2% sucrose.
<b>Reconstitution &amp; Storage</b>	Add 50 ul of distilled water. Final anti-TRABD antibody concentration is 1 mg/ml in PBS buffer with 2% sucrose. For longer periods of storage, store at 20°C. Avoid repeat freeze-thaw cycles.
<b>Precautions</b>	TRABD antibody - middle region is for research use only and not for use in diagnostic or therapeutic procedures.

## Protein Information

---

<b>Name</b>	TRABD
<b>Synonyms</b>	TTG2
<b>Function</b>	Along with MFN2, MIGA2 and PLD6 promotes mitochondrial clustering and fusion (PubMed: <a href="#">38843396</a> ). May play a role in mitochondrial import of proteins, such as that of SLC25A19 (PubMed: <a href="#">40105103</a> ).
<b>Cellular Location</b>	Mitochondrion outer membrane; Single-pass membrane protein

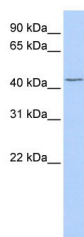
## References

---

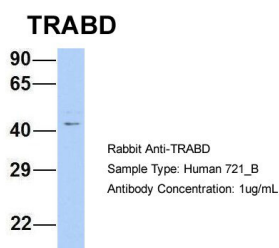
Collins, J.E., (2003) Genome Res. 13(1), 27-36 Reconstitution and Storage: For short term use, store at 2-8°C up to 1 week. For long term storage, store at -20°C in small aliquots to prevent freeze-thaw cycles.

## Images

---



WB Suggested Anti-TRABD Antibody Titration: 0.2-1 µg/ml  
ELISA Titer: 1:312500  
Positive Control: HeLa cell lysate



Host: Rabbit  
Target Name: TRABD  
Sample Tissue: 721\_B  
Antibody Dilution: 1.0 µg/ml TRABD is supported by  
BioGPS gene expression data to be expressed in 721\_B

Please note: All products are 'FOR RESEARCH USE ONLY. NOT FOR USE IN DIAGNOSTIC OR THERAPEUTIC PROCEDURES'.