

DNASE2B antibody - N-terminal region

Rabbit Polyclonal Antibody

Catalog # AI12123

Product Information

Application	WB
Primary Accession	Q8WZ79
Other Accession	NM_021233 , NP_067056
Reactivity	Human, Rat, Rabbit, Dog, Guinea Pig, Horse, Bovine
Predicted	Human, Guinea Pig, Horse, Bovine
Host	Rabbit
Clonality	Polyclonal
Calculated MW	41713

Additional Information

Gene ID	58511
Alias Symbol	DLAD
Other Names	Deoxyribonuclease-2-beta, 3.1.22.1, DNase II-like acid DNase, DNase2-like acid DNase, Deoxyribonuclease II beta, DNase II beta, Endonuclease DLAD, DNASE2B, DLAD
Format	Liquid. Purified antibody supplied in 1x PBS buffer with 0.09% (w/v) sodium azide and 2% sucrose.
Reconstitution & Storage	Add 50 ul of distilled water. Final anti-DNASE2B antibody concentration is 1 mg/ml in PBS buffer with 2% sucrose. For longer periods of storage, store at 20°C. Avoid repeat freeze-thaw cycles.
Precautions	DNASE2B antibody - N-terminal region is for research use only and not for use in diagnostic or therapeutic procedures.

Protein Information

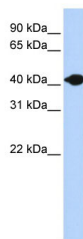
Name	DNASE2B
Synonyms	DLAD
Function	Hydrolyzes DNA under acidic conditions. Does not require divalent cations for activity. Participates in the degradation of nuclear DNA during lens cell differentiation.
Cellular Location	Lysosome.
Tissue Location	Highly expressed in the eye lens and in salivary gland. Detected at lower levels

in lung, prostate and lymph node Isoform 2 is lung specific.

References

Nishimoto, S., (2003) Nature 424(6952), 1071-1074 Reconstitution and Storage: For short term use, store at 2-8°C up to 1 week. For long term storage, store at -20°C in small aliquots to prevent freeze-thaw cycles.

Images



WB Suggested Anti-DNASE2B Antibody Titration: 0.2-1
µg/ml
ELISA Titer: 1:1562500
Positive Control: Human Muscle

Please note: All products are 'FOR RESEARCH USE ONLY. NOT FOR USE IN DIAGNOSTIC OR THERAPEUTIC PROCEDURES'.