

SLC38A4 antibody - middle region

Rabbit Polyclonal Antibody
Catalog # AI12110

Product Information

Application	WB, IHC
Primary Accession	Q969I6
Other Accession	NM_003345 , NP_060488
Reactivity	Human, Mouse, Rat, Rabbit, Zebrafish, Pig, Dog, Guinea Pig, Horse, Bovine
Predicted	Rabbit, Chicken, Dog, Horse, Bovine
Host	Rabbit
Clonality	Polyclonal
Calculated MW	60764

Additional Information

Gene ID	55089
Alias Symbol Other Names	ATA3, FLJ10191, MGC126876, NAT3, PAAT Sodium-coupled neutral amino acid transporter 4, Amino acid transporter A3, Na(+)-coupled neutral amino acid transporter 4, Solute carrier family 38 member 4, System A amino acid transporter 3, System N amino acid transporter 3, SLC38A4, ATA3, NAT3, SNAT4
Format	Liquid. Purified antibody supplied in 1x PBS buffer with 0.09% (w/v) sodium azide and 2% sucrose.
Reconstitution & Storage	Add 100 ul of distilled water. Final anti-SLC38A4 antibody concentration is 1 mg/ml in PBS buffer with 2% sucrose. For longer periods of storage, store at 20°C. Avoid repeat freeze-thaw cycles.
Precautions	SLC38A4 antibody - middle region is for research use only and not for use in diagnostic or therapeutic procedures.

Protein Information

Name	SLC38A4 (HGNC:14679)
Function	Symporter that cotransports neutral amino acids and sodium ions from the extracellular to the intracellular side of the cell membrane (PubMed: 11342143 , PubMed: 19015196 , PubMed: 33928121). The transport is electrogenic, pH dependent and partially tolerates substitution of Na(+) by Li(+) (PubMed: 11414754). Preferentially transports smaller amino acids, such as glycine, L-alanine, L-serine, L-asparagine and L-threonine, followed by L-cysteine, L-histidine, L- proline and L-glutamine and L-methionine (PubMed: 11414754 , PubMed: 33928121).

Cellular Location

Cell membrane; Multi-pass membrane protein. Cell projection, microvillus membrane; Multi-pass membrane protein Note=Microvillus membrane localization in placenta

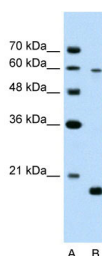
Tissue Location

Expressed almost exclusively in embryonic and adult liver, and at lower levels in the kidney (PubMed:11342143, PubMed:11414754). Expressed at lower levels in adult muscle and pancreas (PubMed:11414754). Detected in fetal blood vessels (PubMed:16148032). Expressed in syncytiotrophoblasts of placenta during first trimester and at term (PubMed:16148032, PubMed:19015196). Highly expressed in first trimester placenta compared to term placenta (PubMed:19015196).

References

Zhu,S.,(2006)Exp.CellRes.312(7),1042-1049ReconstitutionandStorage:Forshorttermuse,storeat2-8Cupto1week.Forlongtermstorage,storeat-20Cinsmallaliquotstopreventfreeze-thawcycles.

Images



WB Suggested Anti-SLC38A4 Antibody Titration: 2.5µg/ml
Positive Control: Jurkat cell lysate

Please note: All products are 'FOR RESEARCH USE ONLY. NOT FOR USE IN DIAGNOSTIC OR THERAPEUTIC PROCEDURES'.