

# CUEDC1 antibody - middle region

Rabbit Polyclonal Antibody  
Catalog # AI12109

## Product Information

---

<b>Application</b>	WB
<b>Primary Accession</b>	<a href="#">Q9NWM3</a>
<b>Other Accession</b>	<a href="#">NM_017949</a> , <a href="#">NP_060419</a>
<b>Reactivity</b>	Human, Mouse, Rat, Rabbit, Zebrafish, Dog, Guinea Pig, Horse, Bovine
<b>Predicted</b>	Human, Mouse, Rat, Rabbit, Zebrafish, Chicken, Dog, Guinea Pig, Horse, Bovine
<b>Host</b>	Rabbit
<b>Clonality</b>	Polyclonal
<b>Calculated MW</b>	42 KDa

## Additional Information

---

<b>Alias Symbol</b>	DKFZp547L163, FLJ20739
<b>Other Names</b>	CUE domain-containing protein 1, CUEDC1
<b>Format</b>	Liquid. Purified antibody supplied in 1x PBS buffer with 0.09% (w/v) sodium azide and 2% sucrose.
<b>Reconstitution &amp; Storage</b>	Add 100 ul of distilled water. Final anti-CUEDC1 antibody concentration is 1 mg/ml in PBS buffer with 2% sucrose. For longer periods of storage, store at 20°C. Avoid repeat freeze-thaw cycles.
<b>Precautions</b>	CUEDC1 antibody - middle region is for research use only and not for use in diagnostic or therapeutic procedures.

## Protein Information

---

## References

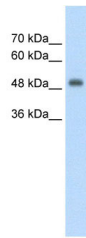
---

Sugano,S.,Unpublished(2000)ReconstitutionandStorage:Forshorttermuse,storeat2-8Cupto1week.Forlongtermstorage,storeat-20Cinsmallaliquotstopreventfreeze-thawcycles.

## Images

---

WB Suggested Anti-CUEDC1 Antibody Titration: 2.5µg/ml  
Positive Control: HepG2 cell lysate



Please note: All products are 'FOR RESEARCH USE ONLY. NOT FOR USE IN DIAGNOSTIC OR THERAPEUTIC PROCEDURES'.