

SRP19 antibody - middle region

Rabbit Polyclonal Antibody
Catalog # AI12094

Product Information

Application	WB
Primary Accession	P09132
Other Accession	NM_003135 , NP_003126
Reactivity	Human, Mouse, Rat, Rabbit, Zebrafish, Pig, Dog, Horse, Bovine
Predicted	Human, Mouse, Rat, Rabbit, Zebrafish, Chicken, Dog, Horse, Bovine
Host	Rabbit
Clonality	Polyclonal
Calculated MW	16156

Additional Information

Gene ID	6728
Other Names	Signal recognition particle 19 kDa protein, SRP19, SRP19
Format	Liquid. Purified antibody supplied in 1x PBS buffer with 0.09% (w/v) sodium azide and 2% sucrose.
Reconstitution & Storage	Add 50 ul of distilled water. Final anti-SRP19 antibody concentration is 1 mg/ml in PBS buffer with 2% sucrose. For longer periods of storage, store at 20°C. Avoid repeat freeze-thaw cycles.
Precautions	SRP19 antibody - middle region is for research use only and not for use in diagnostic or therapeutic procedures.

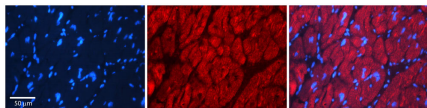
Protein Information

Name	SRP19
Function	Component of the signal recognition particle (SRP) complex, a ribonucleoprotein complex that mediates the cotranslational targeting of secretory and membrane proteins to the endoplasmic reticulum (ER) (By similarity). Binds directly to 7SL RNA (By similarity). Mediates binding of SRP54 to the SRP complex (By similarity).
Cellular Location	Cytoplasm. Nucleus, nucleolus. Nucleus, nucleoplasm. Note=Although the signal recognition particle complex acts in the cytoplasm, it assembles at least in part in the nucleus and/or the nucleolus. SRP19 nuclear import may be mediated by IPO8/Imp8 and TPNO1/Trn

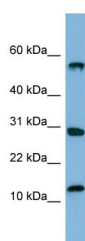
References

Maity, T.S. (2007) *J. Mol. Biol.* 369(2), 512-524. Reconstitution and Storage: For short term use, store at 2-8°C up to 1 week. For long term storage, store at -20°C in small aliquots to prevent freeze-thaw cycles.

Images



Rabbit Anti-SRP19 Antibody
Formalin Fixed Paraffin Embedded Tissue: Human Adult heart
Observed Staining: Cytoplasmic
Primary Antibody
Concentration: 1:600
Secondary Antibody: Donkey anti-Rabbit-Cy2/3
Secondary Antibody
Concentration: 1:200
Magnification: 20X
Exposure Time: 0.5 s 2.0 sec
Protocol located in Reviews and Data.



WB Suggested Anti-SRP19 Antibody Titration: 0.2-1 µg/ml
ELISA Titer: 1:12500
Positive Control: Human Small Intestine

Please note: All products are 'FOR RESEARCH USE ONLY. NOT FOR USE IN DIAGNOSTIC OR THERAPEUTIC PROCEDURES'.