

TAL2 antibody - N-terminal region

Rabbit Polyclonal Antibody
Catalog # AI12075

Product Information

Application	WB
Primary Accession	Q16559
Other Accession	NM_005421 , NP_005412
Reactivity	Human, Mouse, Rat, Rabbit, Zebrafish, Dog, Guinea Pig, Horse, Bovine
Predicted	Human, Mouse, Rat, Zebrafish, Chicken, Dog, Guinea Pig, Bovine
Host	Rabbit
Clonality	Polyclonal
Calculated MW	12291

Additional Information

Gene ID	6887
Other Names	T-cell acute lymphocytic leukemia protein 2, TAL-2, Class A basic helix-loop-helix protein 19, bHLHa19, TAL2, BHLHA19
Format	Liquid. Purified antibody supplied in 1x PBS buffer with 0.09% (w/v) sodium azide and 2% sucrose.
Reconstitution & Storage	Add 50 ul of distilled water. Final anti-TAL2 antibody concentration is 1 mg/ml in PBS buffer with 2% sucrose. For longer periods of storage, store at 20°C. Avoid repeat freeze-thaw cycles.
Precautions	TAL2 antibody - N-terminal region is for research use only and not for use in diagnostic or therapeutic procedures.

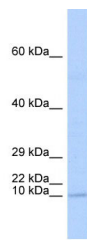
Protein Information

Name	TAL2
Synonyms	BHLHA19

References

Humphray, S.J., (2004) Nature 429(6990), 369-374 Reconstitution and Storage: For short term use, store at 2-8°C up to 1 week. For long term storage, store at -20°C in small aliquots to prevent freeze-thaw cycles. Publications: Courtial, N. et al. The T-cell oncogene Tal2 is a target of PU.1 and upregulated during osteoclastogenesis. PLoS One 8, e76637 (2013). WB, Bovine, Guinea pig, Dog, Human, Rat, Horse, Zebrafish, Rabbit, Mouse 24086757

Images



WB Suggested Anti-TAL2 Antibody Titration: 0.2-1 $\mu\text{g/ml}$
ELISA Titer: 1:1562500
Positive Control: Human brain

Please note: All products are 'FOR RESEARCH USE ONLY. NOT FOR USE IN DIAGNOSTIC OR THERAPEUTIC PROCEDURES'.