

Gbx1 antibody - N-terminal region

Rabbit Polyclonal Antibody

Catalog # AI12050

Product Information

Application	WB
Primary Accession	P82976
Other Accession	NM_015739 , NP_056554
Reactivity	Mouse, Rat, Pig, Dog
Predicted	Mouse
Host	Rabbit
Clonality	Polyclonal
Calculated MW	43710

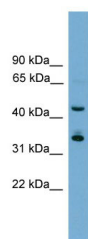
Additional Information

Gene ID	231044
Alias Symbol	Gbx-1
Other Names	Homeobox protein GBX-1, Gastrulation and brain-specific homeobox protein 1, Gbx1
Format	Liquid. Purified antibody supplied in 1x PBS buffer with 0.09% (w/v) sodium azide and 2% sucrose.
Reconstitution & Storage	Add 50 ul of distilled water. Final anti-Gbx1 antibody concentration is 1 mg/ml in PBS buffer with 2% sucrose. For longer periods of storage, store at 20°C. Avoid repeat freeze-thaw cycles.
Precautions	Gbx1 antibody - N-terminal region is for research use only and not for use in diagnostic or therapeutic procedures.

Protein Information

Name	Gbx1
Cellular Location	Nucleus {ECO:0000255 PROSITE-ProRule:PRU00108}.
Tissue Location	Expressed in CNS including rhombomeres 3 and 5, optic vesicles, and the medial ganglionic eminence

Images



WB Suggested Anti-Gbx1 Antibody Titration: 0.2-1 µg/ml
ELISA Titer: 1:312500
Positive Control: Mouse liver

Please note: All products are 'FOR RESEARCH USE ONLY. NOT FOR USE IN DIAGNOSTIC OR THERAPEUTIC PROCEDURES'.