

# CCL5 antibody - middle region

Rabbit Polyclonal Antibody

Catalog # AI12049

## Product Information

---

<b>Application</b>	WB
<b>Primary Accession</b>	<a href="#">P30882</a>
<b>Other Accession</b>	<a href="#">NM_013653</a> , <a href="#">NP_038681</a>
<b>Reactivity</b>	Human, Mouse, Rat, Rabbit, Pig, Dog, Guinea Pig, Horse, Bovine
<b>Predicted</b>	Human, Mouse, Rat, Pig, Chicken, Dog, Guinea Pig, Horse, Bovine
<b>Host</b>	Rabbit
<b>Clonality</b>	Polyclonal
<b>Calculated MW</b>	10071

## Additional Information

---

<b>Gene ID</b>	20304
<b>Alias Symbol</b>	SISd, Scya5, RANTES, TCP228, MuRante, MuRantes
<b>Other Names</b>	C-C motif chemokine 5, MuRantes, SIS-delta, Small-inducible cytokine A5, T-cell-specific protein RANTES, Ccl5, Scya5
<b>Format</b>	Liquid. Purified antibody supplied in 1x PBS buffer with 0.09% (w/v) sodium azide and 2% sucrose.
<b>Reconstitution &amp; Storage</b>	Add 100 ul of distilled water. Final anti-CCL5 antibody concentration is 1 mg/ml in PBS buffer with 2% sucrose. For longer periods of storage, store at 20°C. Avoid repeat freeze-thaw cycles.
<b>Precautions</b>	CCL5 antibody - middle region is for research use only and not for use in diagnostic or therapeutic procedures.

## Protein Information

---

<b>Name</b>	Ccl5
<b>Synonyms</b>	Scya5
<b>Function</b>	Chemoattractant for blood monocytes, memory T-helper cells and eosinophils. Causes the release of histamine from basophils and activates eosinophils. May activate several chemokine receptors including CCR1, CCR3, CCR4 and CCR5. May also be an agonist of the G protein-coupled receptor GPR75. Together with GPR75, may play a role in neuron survival through activation of a downstream signaling pathway involving the PI3, Akt and MAP kinases. By activating GPR75 may also play a role in insulin secretion by islet cells.

<b>Cellular Location</b>	Secreted.
<b>Tissue Location</b>	T-cell and macrophage specific.

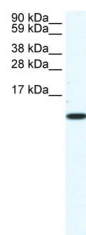
## References

---

Palaniappan, R., et al., (2006) J. Immunol. 176(4), 2346-2356 Reconstitution and Storage: For short term use, store at 2-8°C up to 1 week. For long term storage, store at -20°C in small aliquots to prevent freeze-thaw cycles.

## Images

---



WB Suggested Anti-CCL5 Antibody Titration: 1.25 µg/ml  
 ELISA Titer: 1:62500  
 Positive Control: NIH/3T3 cell lysate

Please note: All products are 'FOR RESEARCH USE ONLY. NOT FOR USE IN DIAGNOSTIC OR THERAPEUTIC PROCEDURES'.