

# UPB1 antibody - middle region

Rabbit Polyclonal Antibody

Catalog # AI12023

## Product Information

Application	WB
Primary Accession	<a href="#">Q9UBR1</a>
Other Accession	<a href="#">NM_016327</a> , <a href="#">NP_057411</a>
Reactivity	Human, Mouse, Rat, Rabbit, Zebrafish, Pig, Goat, Dog, Horse, Bovine
Predicted	Human, Mouse, Rabbit, Zebrafish, Pig, Chicken, Dog, Horse, Bovine
Host	Rabbit
Clonality	Polyclonal
Calculated MW	43166

## Additional Information

Gene ID	51733
Alias Symbol	BUP1
Other Names	Beta-ureidopropionase, 3.5.1.6, BUP-1, Beta-alanine synthase, N-carbamoyl-beta-alanine amidohydrolase, UPB1, BUP1
Format	Liquid. Purified antibody supplied in 1x PBS buffer with 0.09% (w/v) sodium azide and 2% sucrose.
Reconstitution & Storage	Add 100 ul of distilled water. Final anti-UPB1 antibody concentration is 1 mg/ml in PBS buffer with 2% sucrose. For longer periods of storage, store at 20°C. Avoid repeat freeze-thaw cycles.
Precautions	UPB1 antibody - middle region is for research use only and not for use in diagnostic or therapeutic procedures.

## Protein Information

Name	UPB1
Synonyms	BUP1
Function	Catalyzes a late step in pyrimidine degradation (PubMed: <a href="#">22525402</a> , PubMed: <a href="#">24526388</a> ). Converts N-carbamoyl-beta-alanine (3-ureidopropanoate) into beta-alanine, ammonia and carbon dioxide (PubMed: <a href="#">10415095</a> , PubMed: <a href="#">10542323</a> , PubMed: <a href="#">11508704</a> , PubMed: <a href="#">22525402</a> , PubMed: <a href="#">24526388</a> , PubMed: <a href="#">29976570</a> ). Likewise, converts N-carbamoyl-beta-aminoisobutyrate (3-ureidoisobutyrate) into beta-aminoisobutyrate, ammonia and carbon dioxide (Probable).

<b>Cellular Location</b>	Cytoplasm.
<b>Tissue Location</b>	Detected in liver (at protein level).

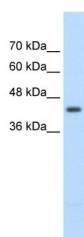
## References

---

van (2004) Hum. Mol. Genet. 13 (22), 2793-2801 Reconstitution and Storage:For short term use, store at 2-8C up to 1 week. For long term storage, store at -20C in small aliquots to prevent freeze-thaw cycles.Publications:Hu, Z. et al. Quantitative liver-specific protein fingerprint in blood: a signature for hepatotoxicity. Theranostics 4, 215-28 (2014). WB, Human, Bovine, Zebrafish, Rat, Dog, Pig, H, Rabbit, Guinea pig, Goat, Mouse24465277

## Images

---



WB Suggested Anti-UPB1 Antibody Titration: 2.5µg/ml  
Positive Control: Jurkat cell lysate

Please note: All products are 'FOR RESEARCH USE ONLY. NOT FOR USE IN DIAGNOSTIC OR THERAPEUTIC PROCEDURES'.