

# SLC20A2 antibody - N-terminal region

Rabbit Polyclonal Antibody

Catalog # AI12000

## Product Information

---

Application	WB
Primary Accession	<a href="#">Q08357</a>
Other Accession	<a href="#">NM_006749</a> , <a href="#">NP_006740</a>
Reactivity	Human, Mouse, Rat, Rabbit, Zebrafish, Dog, Horse, Bovine
Predicted	Mouse, Rabbit, Chicken, Dog, Horse
Host	Rabbit
Clonality	Polyclonal
Calculated MW	70392

## Additional Information

---

Gene ID	6575
Alias Symbol	GLVR2, Glvr-2, MLVAR, PIT-2, Ram1, pit2, hPit2
Other Names	Sodium-dependent phosphate transporter 2, Gibbon ape leukemia virus receptor 2, GLVR-2, Phosphate transporter 2, PiT-2, Pit2, hPit2, Solute carrier family 20 member 2, SLC20A2, GLVR2, PIT2
Format	Liquid. Purified antibody supplied in 1x PBS buffer with 0.09% (w/v) sodium azide and 2% sucrose.
Reconstitution & Storage	Add 50 ul of distilled water. Final anti-SLC20A2 antibody concentration is 1 mg/ml in PBS buffer with 2% sucrose. For longer periods of storage, store at 20°C. Avoid repeat freeze-thaw cycles.
Precautions	SLC20A2 antibody - N-terminal region is for research use only and not for use in diagnostic or therapeutic procedures.

## Protein Information

---

Name	SLC20A2
Synonyms	GLVR2, PIT2
Function	Sodium-phosphate symporter which preferentially transports the monovalent form of phosphate with a stoichiometry of two sodium ions per phosphate ion (PubMed: <a href="#">12205090</a> , PubMed: <a href="#">15955065</a> , PubMed: <a href="#">16790504</a> , PubMed: <a href="#">17494632</a> , PubMed: <a href="#">22327515</a> , PubMed: <a href="#">28722801</a> , PubMed: <a href="#">30704756</a> ). Plays a critical role in the determination of bone quality and strength by providing phosphate for bone mineralization (By similarity). Required to maintain normal cerebrospinal fluid phosphate levels (By

similarity). Mediates phosphate-induced calcification of vascular smooth muscle cells (VCMCs) and can functionally compensate for loss of SLC20A1 in VCMCs (By similarity).

**Cellular Location**

Cell membrane; Multi-pass membrane protein. Apical cell membrane {ECO:0000250|UniProtKB:Q63488}; Multi-pass membrane protein

**Tissue Location**

Ubiquitously expressed.

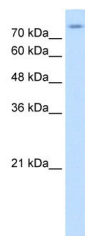
## References

---

Bottger,P. (2005) FEBS J. 272 (12), 3060-3074  
Reconstitution and Storage:For short term use, store at 2-8C up to 1 week. For long term storage, store at -20C in small aliquots to prevent freeze-thaw cycles.

## Images

---



WB Suggested Anti-SLC20A2 Antibody Titration: 0.2-1  
µg/ml  
Positive Control: HepG2 cell lysate

Please note: All products are 'FOR RESEARCH USE ONLY. NOT FOR USE IN DIAGNOSTIC OR THERAPEUTIC PROCEDURES'.