

GPR6 antibody - N-terminal region

Rabbit Polyclonal Antibody

Catalog # AI11990

Product Information

Application	WB, IHC
Primary Accession	P46095
Other Accession	NM_005284 , NP_005275
Reactivity	Human, Mouse, Rat, Bovine
Predicted	Human, Mouse, Rat, Bovine
Host	Rabbit
Clonality	Polyclonal
Calculated MW	37881

Additional Information

Gene ID	2830
Other Names	G-protein coupled receptor 6, Sphingosine 1-phosphate receptor GPR6, GPR6
Format	Liquid. Purified antibody supplied in 1x PBS buffer with 0.09% (w/v) sodium azide and 2% sucrose.
Reconstitution & Storage	Add 50 ul of distilled water. Final anti-GPR6 antibody concentration is 1 mg/ml in PBS buffer with 2% sucrose. For longer periods of storage, store at 20°C. Avoid repeat freeze-thaw cycles.
Precautions	GPR6 antibody - N-terminal region is for research use only and not for use in diagnostic or therapeutic procedures.

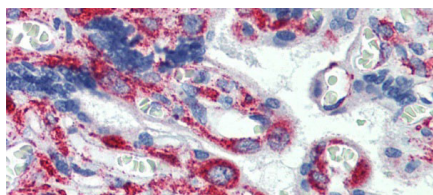
Protein Information

Name	GPR6
Function	Orphan receptor with constitutive G(s) signaling activity that activate cyclic AMP. Promotes neurite outgrowth and blocks myelin inhibition in neurons (By similarity).
Cellular Location	Cell membrane; Multi-pass membrane protein Note=Detected in the intracellular compartments. It is currently unclear whether this is a cell surface or intracellular receptor

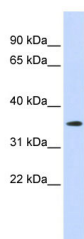
References

Mungall,A.J., (2003) Nature 425 (6960), 805-811 Reconstitution and Storage:For short term use, store at 2-8C up to 1 week. For long term storage, store at -20C in small aliquots to prevent freeze-thaw cycles.

Images



Immunohistochemistry with Human Placenta lysate tissue at an antibody concentration of 5.0µg/ml using anti-GPR6 antibody (AI11990)



WB Suggested Anti-GPR6 Antibody Titration: 0.2-1 µg/ml
ELISA Titer: 1:312500
Positive Control: Human Placenta

Please note: All products are 'FOR RESEARCH USE ONLY. NOT FOR USE IN DIAGNOSTIC OR THERAPEUTIC PROCEDURES'.