

# Cyp4b1 Antibody - C-terminal region

Rabbit Polyclonal Antibody

Catalog # AI11943

## Product Information

---

<b>Application</b>	WB
<b>Primary Accession</b>	<a href="#">Q64462</a>
<b>Other Accession</b>	<a href="#">NM_007823</a> , <a href="#">NP_031849</a>
<b>Reactivity</b>	Human, Mouse, Rat, Rabbit, Goat, Dog, Horse, Bovine
<b>Predicted</b>	Human, Mouse, Rat, Pig, Goat, Dog, Horse
<b>Host</b>	Rabbit
<b>Clonality</b>	Polyclonal
<b>Calculated MW</b>	58900

## Additional Information

---

<b>Gene ID</b>	13120
<b>Other Names</b>	Cytochrome P450 4B1, 1.14.14.1, CYP4B1, Cyp4b1
<b>Format</b>	Liquid. Purified antibody supplied in 1x PBS buffer with 0.09% (w/v) sodium azide and 2% sucrose.
<b>Reconstitution &amp; Storage</b>	Add 50 ul of distilled water. Final anti-Cyp4b1 antibody concentration is 1 mg/ml in PBS buffer with 2% sucrose. For longer periods of storage, store at 20°C. Avoid repeat freeze-thaw cycles.
<b>Precautions</b>	Cyp4b1 Antibody - C-terminal region is for research use only and not for use in diagnostic or therapeutic procedures.

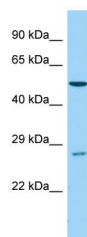
## Protein Information

---

<b>Name</b>	Cyp4b1
<b>Function</b>	Responsible for mutagenic activation of 3-methoxy-4- aminoazobenzene (3-MeO-AAB); a potent procarcinogen. Also active on 2- aminofluorene and 2-aminoanthracene.
<b>Cellular Location</b>	Endoplasmic reticulum membrane; Peripheral membrane protein. Microsome membrane; Peripheral membrane protein
<b>Tissue Location</b>	Present abundantly in renal microsomes of male mice but not in those of female mice. Also present in pulmonary microsomes of male and female mice. Not found in liver

## Images

---



Host: Rabbit  
Target Name: Cyp4b1  
Sample Tissue: Mouse Testis lysates  
Antibody Dilution: 1.0µg/ml

Please note: All products are 'FOR RESEARCH USE ONLY. NOT FOR USE IN DIAGNOSTIC OR THERAPEUTIC PROCEDURES'.