

LAMB3 antibody - middle region

Rabbit Polyclonal Antibody

Catalog # AI11928

Product Information

Application	WB
Primary Accession	Q13751
Other Accession	NM_000228 , NP_000219
Reactivity	Human, Rabbit, Dog, Bovine
Predicted	Human
Host	Rabbit
Clonality	Polyclonal
Calculated MW	129572

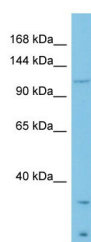
Additional Information

Gene ID	3914
Alias Symbol	LAMNB1, LAM5, BM600-125KDA
Other Names	Laminin subunit beta-3, Epiligrin subunit bata, Kalinin B1 chain, Kalinin subunit beta, Laminin B1k chain, Laminin-5 subunit beta, Nicein subunit beta, LAMB3, LAMNB1
Format	Liquid. Purified antibody supplied in 1x PBS buffer with 0.09% (w/v) sodium azide and 2% sucrose.
Reconstitution & Storage	Add 50 ul of distilled water. Final anti-LAMB3 antibody concentration is 1 mg/ml in PBS buffer with 2% sucrose. For longer periods of storage, store at 20°C. Avoid repeat freeze-thaw cycles.
Precautions	LAMB3 antibody - middle region is for research use only and not for use in diagnostic or therapeutic procedures.

Protein Information

Name	LAMB3
Synonyms	LAMNB1
Function	Binding to cells via a high affinity receptor, laminin is thought to mediate the attachment, migration and organization of cells into tissues during embryonic development by interacting with other extracellular matrix components.
Cellular Location	Secreted, extracellular space, extracellular matrix, basement membrane
Tissue Location	Found in the basement membranes (major component).

Images



WB Suggested Anti-LAMB3 Antibody Titration: 0.2-1 µg/ml
ELISA Titer: 1:62500
Positive Control: COLO205 cell lysate

Please note: All products are 'FOR RESEARCH USE ONLY. NOT FOR USE IN DIAGNOSTIC OR THERAPEUTIC PROCEDURES'.