

LBP antibody - middle region

Rabbit Polyclonal Antibody

Catalog # AI11906

Product Information

Application	WB
Primary Accession	P18428
Other Accession	NM_004139 , NP_004130
Reactivity	Human, Rat, Rabbit, Pig, Dog, Horse
Predicted	Human, Rabbit, Pig, Horse
Host	Rabbit
Clonality	Polyclonal
Calculated MW	53384

Additional Information

Gene ID	3929
Alias Symbol	MGC22233, BPIFD2
Other Names	Lipopolysaccharide-binding protein, LBP, LBP
Format	Liquid. Purified antibody supplied in 1x PBS buffer with 0.09% (w/v) sodium azide and 2% sucrose.
Reconstitution & Storage	Add 50 ul of distilled water. Final anti-LBP antibody concentration is 1 mg/ml in PBS buffer with 2% sucrose. For longer periods of storage, store at 20°C. Avoid repeat freeze-thaw cycles.
Precautions	LBP antibody - middle region is for research use only and not for use in diagnostic or therapeutic procedures.

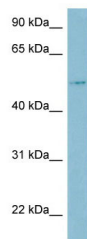
Protein Information

Name	LBP
Function	Plays a role in the innate immune response. Binds to the lipid A moiety of bacterial lipopolysaccharides (LPS), a glycolipid present in the outer membrane of all Gram-negative bacteria (PubMed: 24120359 , PubMed: 7517398). Acts as an affinity enhancer for CD14, facilitating its association with LPS. Promotes the release of cytokines in response to bacterial lipopolysaccharide (PubMed: 24120359 , PubMed: 7517398).
Cellular Location	Secreted. Cytoplasmic granule membrane {ECO:0000250 UniProtKB:P17213}. Note=Membrane- associated in polymorphonuclear Leukocytes (PMN) granules {ECO:0000250 UniProtKB:P17213}

Tissue Location

Detected in blood serum (at protein level).

Images



WB Suggested Anti-LBP Antibody Titration: 0.2-1 µg/ml

ELISA Titer: 1:312500

Positive Control: THP-1 cell lysate

Please note: All products are 'FOR RESEARCH USE ONLY. NOT FOR USE IN DIAGNOSTIC OR THERAPEUTIC PROCEDURES'.