

Wdr12 antibody - middle region

Rabbit Polyclonal Antibody

Catalog # AI11875

Product Information

Application	WB
Primary Accession	Q9JJA4
Other Accession	NM_021312 , NP_067287
Reactivity	Human, Mouse, Rat, Rabbit, Zebrafish, Pig, Dog, Horse, Bovine, Yeast
Predicted	Mouse, Rat, Zebrafish, Chicken, Dog
Host	Rabbit
Clonality	Polyclonal
Calculated MW	47347

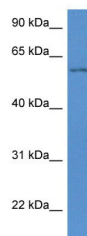
Additional Information

Gene ID	57750
Alias Symbol	4933402C23Rik, Ytm1, Ytm1p
Other Names	Ribosome biogenesis protein WDR12 {ECO:0000255 HAMAP-Rule:MF_03029}, WD repeat-containing protein 12 {ECO:0000255 HAMAP-Rule:MF_03029}, Wdr12
Format	Liquid. Purified antibody supplied in 1x PBS buffer with 0.09% (w/v) sodium azide and 2% sucrose.
Reconstitution & Storage	Add 50 ul of distilled water. Final anti-Wdr12 antibody concentration is 1 mg/ml in PBS buffer with 2% sucrose. For longer periods of storage, store at 20°C. Avoid repeat freeze-thaw cycles.
Precautions	Wdr12 antibody - middle region is for research use only and not for use in diagnostic or therapeutic procedures.

Protein Information

Name	Wdr12
Function	Component of the PeBoW complex, which is required for maturation of 28S and 5.8S ribosomal RNAs and formation of the 60S ribosome.
Cellular Location	Nucleus, nucleolus {ECO:0000255 HAMAP- Rule:MF_03029}. Nucleus, nucleoplasm {ECO:0000255 HAMAP-Rule:MF_03029}

Images



WB Suggested Anti-Wdr12 Antibody Titration: 1.0 µg/ml
Positive Control: Mouse Spleen

Please note: All products are 'FOR RESEARCH USE ONLY. NOT FOR USE IN DIAGNOSTIC OR THERAPEUTIC PROCEDURES'.