

WDR5 antibody - C-terminal region

Rabbit Polyclonal Antibody
Catalog # AI11872

Product Information

Application	WB, IHC, IP
Primary Accession	Q5M786
Other Accession	NM_017588 , NP_060058
Reactivity	Human, Mouse, Rat, Zebrafish, Pig, Dog, Horse, Bovine, Yeast
Predicted	Human, Mouse, Rat, Zebrafish, Pig, Chicken, Dog, Horse, Bovine
Host	Rabbit
Clonality	Polyclonal
Calculated MW	36685

Additional Information

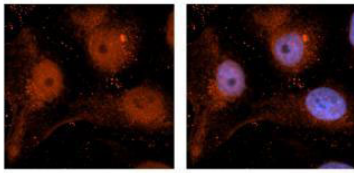
Gene ID	496891
Alias Symbol	BIG-3, SWD3
Other Names	WD repeat-containing protein 5, wdr5
Format	Liquid. Purified antibody supplied in 1x PBS buffer with 0.09% (w/v) sodium azide and 2% sucrose.
Reconstitution & Storage	Add 50 ul of distilled water. Final anti-WDR5 antibody concentration is 1 mg/ml in PBS buffer with 2% sucrose. For longer periods of storage, store at 20°C. Avoid repeat freeze-thaw cycles.
Precautions	WDR5 antibody - C-terminal region is for research use only and not for use in diagnostic or therapeutic procedures.

Protein Information

Name	wdr5
Function	Contributes to histone modification. May position the N- terminus of histone H3 for efficient trimethylation at 'Lys-4'. As part of the MLL1/MLL complex it is involved in methylation and dimethylation at 'Lys-4' of histone H3. H3 'Lys-4' methylation represents a specific tag for epigenetic transcriptional activation. As part of the NSL complex it may be involved in acetylation of nucleosomal histone H4 on several lysine residues. May regulate osteoblasts differentiation (By similarity).
Cellular Location	Nucleus.

Images

WDR5

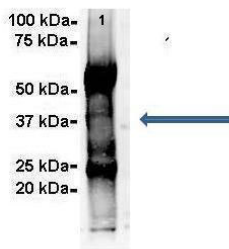


Red: Antibody
Blue: DAPI

See IHC 1 Data and Customer Feedback for more information

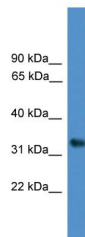
Sample Type : Human brain stem cells (NT2)
Primary Antibody Dilution : 1:500
Secondary Antibody : Goat anti-rabbit Alexa Fluor 594
Secondary Antibody Dilution : 1:1000 Color/Signal
Descriptions : Red: WDR5 Blue: DAPI
Gene Name : WDR5 Submitted by : Dr. Yuzhi Chen,
University of Arkansas for Medical Science

WDR5



See Other Application 1 Data and Customer Feedback for more information

Amount and Sample Type : 500 ug Human NT2 cell lysate
Amount of IP Antibody : 6 ug Primary Antibody : WDR5
Primary Antibody Dilution : 1:500
Secondary Antibody : Goat anti-rabbit Alexa-Fluor 594
Secondary Antibody Dilution : 1:5000
Gene Name : WDR5 Submitted by : Dr. Yuzhi Chen,
University of Arkansas for Medical Science



WB Suggested Anti-WDR5 Antibody Titration: 0.2-1 µg/ml
ELISA Titer: 1:62500
Positive Control: 721_B cell lysate

Please note: All products are 'FOR RESEARCH USE ONLY. NOT FOR USE IN DIAGNOSTIC OR THERAPEUTIC PROCEDURES'.