

# CPEB2 antibody - middle region

Rabbit Polyclonal Antibody

Catalog # AI11855

## Product Information

---

<b>Application</b>	WB
<b>Primary Accession</b>	<a href="#">Q7Z5Q1</a>
<b>Other Accession</b>	<a href="#">XM_944544</a> , <a href="#">XP_949637</a>
<b>Reactivity</b>	Human, Mouse, Rat, Rabbit, Zebrafish, Pig, Dog, Horse, Bovine
<b>Predicted</b>	Human, Mouse, Rat, Rabbit, Zebrafish, Pig, Chicken, Bovine
<b>Host</b>	Rabbit
<b>Clonality</b>	Polyclonal
<b>Calculated MW</b>	64944

## Additional Information

---

<b>Gene ID</b>	132864
<b>Other Names</b>	Cytoplasmic polyadenylation element-binding protein 2, CPE-BP2, CPE-binding protein 2, hCPEB-2, CPEB2
<b>Format</b>	Liquid. Purified antibody supplied in 1x PBS buffer with 0.09% (w/v) sodium azide and 2% sucrose.
<b>Reconstitution &amp; Storage</b>	Add 100 ul of distilled water. Final anti-CPEB2 antibody concentration is 1 mg/ml in PBS buffer with 2% sucrose. For longer periods of storage, store at 20°C. Avoid repeat freeze-thaw cycles.
<b>Precautions</b>	CPEB2 antibody - middle region is for research use only and not for use in diagnostic or therapeutic procedures.

## Protein Information

---

<b>Name</b>	CPEB2
<b>Function</b>	May play a role in translational regulation of stored mRNAs in transcriptionally inactive haploid spermatids. Binds to poly(U) RNA oligomers (By similarity). Required for cell cycle progression, specifically for the transition from metaphase to anaphase (PubMed: <a href="#">26398195</a> ).
<b>Cellular Location</b>	Cytoplasm {ECO:0000250 UniProtKB:Q812E0}.

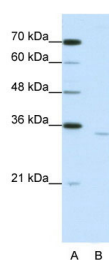
## References

---

Kurihara Y. (2003) Biol Reprod. 69(1):261-8. Epub 2003 Apr 2. Reconstitution and Storage: For short term use, store at 2-8C up to 1 week. For long term storage, store at -20C in small aliquots to prevent freeze-thaw cycles.

## Images

---



WB Suggested Anti-CPEB2 Antibody Titration: 1.25µg/ml  
ELISA Titer: 1:62500  
Positive Control: Jurkat cell lysate

Please note: All products are 'FOR RESEARCH USE ONLY. NOT FOR USE IN DIAGNOSTIC OR THERAPEUTIC PROCEDURES'.