

SLA antibody - N-terminal region

Rabbit Polyclonal Antibody

Catalog # AI11850

Product Information

Application	WB, IHC
Primary Accession	A1A4F3
Other Accession	NM_153825 , NP_722547
Reactivity	Human, Mouse, Rat, Rabbit, Zebrafish, Dog, Horse, Bovine
Predicted	Human, Rat, Zebrafish, Chicken
Host	Rabbit
Clonality	Polyclonal
Calculated MW	49 KDa

Additional Information

Alias Symbol	LP, SLA, PCH2D, SLA/LP
Format	Liquid. Purified antibody supplied in 1x PBS buffer with 0.09% (w/v) sodium azide and 2% sucrose.
Reconstitution & Storage	Add 50 ul of distilled water. Final anti-SLA/LP antibody concentration is 1 mg/ml in PBS buffer with 2% sucrose. For longer periods of storage, store at 20°C. Avoid repeat freeze-thaw cycles.
Precautions	SLA antibody - N-terminal region is for research use only and not for use in diagnostic or therapeutic procedures.

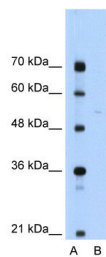
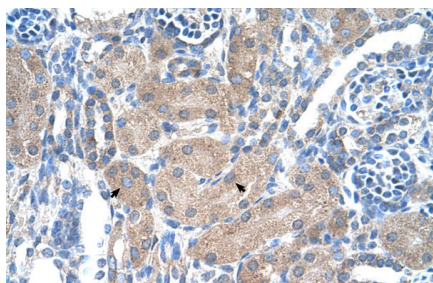
Protein Information

References

Xu,X.M., (2005) J. Biol. Chem. 280 (50), 41568-41575 Reconstitution and Storage:For short term use, store at 2-8C up to 1 week. For long term storage, store at -20C in small aliquots to prevent freeze-thaw cycles.

Images

Rabbit Anti-SLA/LP Antibody
Paraffin Embedded Tissue: Human Kidney
Cellular Data: Epithelial cells of renal tubule
Antibody Concentration: 4.0-8.0 µg/ml
Magnification: 400X



WB Suggested Anti-SLA Antibody Titration: 0.2-1 µg/ml
 ELISA Titer: 1:312500
 Positive Control: Jurkat cell lysate

Please note: All products are 'FOR RESEARCH USE ONLY. NOT FOR USE IN DIAGNOSTIC OR THERAPEUTIC PROCEDURES'.