

Rbfox1 Antibody - N-terminal region

Rabbit Polyclonal Antibody

Catalog # AI11816

Product Information

Application	WB
Primary Accession	Q9J143
Other Accession	NM_021477 , NP_067452
Reactivity	Human, Mouse, Rat, Dog, Horse, Bovine
Predicted	Human, Mouse, Rat, Pig, Dog
Host	Rabbit
Clonality	Polyclonal
Calculated MW	42678

Additional Information

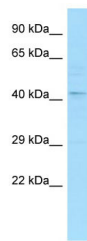
Gene ID	268859
Alias Symbol	A2bp, Hrnbp1, fox-1
Other Names	RNA binding protein fox-1 homolog 1, Ataxin-2-binding protein 1, Fox-1 homolog A, Rbfox1, A2bp, A2bp1, Fox1
Format	Liquid. Purified antibody supplied in 1x PBS buffer with 0.09% (w/v) sodium azide and 2% sucrose.
Reconstitution & Storage	Add 50 ul of distilled water. Final anti-Rbfox1 antibody concentration is 1 mg/ml in PBS buffer with 2% sucrose. For longer periods of storage, store at 20°C. Avoid repeat freeze-thaw cycles.
Precautions	Rbfox1 Antibody - N-terminal region is for research use only and not for use in diagnostic or therapeutic procedures.

Protein Information

Name	Rbfox1
Synonyms	A2bp, A2bp1, Fox1
Function	RNA-binding protein that regulates alternative splicing events by binding to 5'-UGCAUGU-3' elements. Prevents binding of U2AF2 to the 3'-splice site. Regulates alternative splicing of tissue- specific exons and of differentially spliced exons during erythropoiesis.
Cellular Location	Nucleus. Cytoplasm. Note=Predominantly nuclear.
Tissue Location	Detected in brain (at protein level). Detected in heart, brain, neurons, skeletal

muscle and embryo

Images



Host: Rabbit
Target Name: Rbfox1
Sample Tissue: Mouse Testis lysates
Antibody Dilution: 1.0µg/ml

Please note: All products are 'FOR RESEARCH USE ONLY. NOT FOR USE IN DIAGNOSTIC OR THERAPEUTIC PROCEDURES'.