

# RNASEH2A antibody - middle region

Rabbit Polyclonal Antibody  
Catalog # AI11777

## Product Information

---

|                          |  |
|--------------------------|--|
| <b>Application</b>       | WB, IHC  |
| <b>Primary Accession</b> | <a href="#">O75792</a>   |
| <b>Other Accession</b>   | <a href="#">NM_006397</a> , <a href="#">NP_006388</a>              |
| <b>Reactivity</b>        | Human, Mouse, Rat, Zebrafish, Pig, Goat, Dog, Horse, Bovine, Yeast |
| <b>Predicted</b>         | Human, Rat, Pig  |
| <b>Host</b>              | Rabbit   |
| <b>Clonality</b>         | Polyclonal   |
| <b>Calculated MW</b>     | 33395  |

## Additional Information

---

|   |  |
|---|--|
| <b>Gene ID</b>                            | 10535  |
| <b>Alias Symbol</b><br><b>Other Names</b> | AGS4, JUNB, RNHL, RNHIA, RNASEHI<br>Ribonuclease H2 subunit A, RNase H2 subunit A, 3.1.26.4, Aicardi-Goutieres syndrome 4 protein, AGS4, RNase H(35), Ribonuclease HI large subunit, RNase HI large subunit, Ribonuclease HI subunit A, RNASEH2A, RNASEHI, RNHIA |
| <b>Format</b>                             | Liquid. Purified antibody supplied in 1x PBS buffer with 0.09% (w/v) sodium azide and 2% sucrose.  |
| <b>Reconstitution &amp; Storage</b>       | Add 100 ul of distilled water. Final anti-RNASEH2A antibody concentration is 1 mg/ml in PBS buffer with 2% sucrose. For longer periods of storage, store at 20°C. Avoid repeat freeze-thaw cycles.   |
| <b>Precautions</b>                        | RNASEH2A antibody - middle region is for research use only and not for use in diagnostic or therapeutic procedures.  |

## Protein Information

---

|                          |   |
|--------------------------|---|
| <b>Name</b>              | RNASEH2A  |
| <b>Synonyms</b>          | RNASEHI, RNHIA  |
| <b>Function</b>          | Catalytic subunit of RNase HII, an endonuclease that specifically degrades the RNA of RNA:DNA hybrids. Participates in DNA replication, possibly by mediating the removal of lagging-strand Okazaki fragment RNA primers during DNA replication. Mediates the excision of single ribonucleotides from DNA:RNA duplexes. |
| <b>Cellular Location</b> | Nucleus.  |

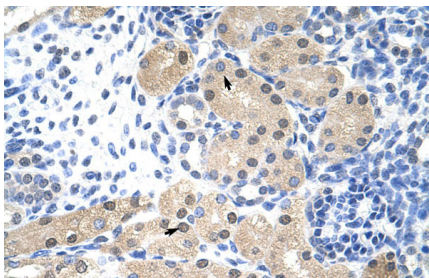
## References

---

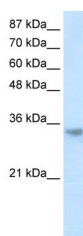
Frank,P., (1998) Proc. Natl. Acad. Sci. U.S.A. 95 (22), 12872-12877  
Reconstitution and Storage: For short term use, store at 2-8C up to 1 week. For long term storage, store at -20C in small aliquots to prevent freeze-thaw cycles.

## Images

---



Rabbit Anti-RNASEH2A Antibody  
Paraffin Embedded Tissue: Human Kidney  
Cellular Data: Epithelial cells of renal tubule  
Antibody Concentration: 4.0-8.0 µg/ml  
Magnification: 400X



WB Suggested Anti-RNASEH2A Antibody Titration:  
1.25µg/ml  
Positive Control: Jurkat cell lysate  
RNASEH2A is supported by BioGPS gene expression data to be expressed in Jurkat

Please note: All products are 'FOR RESEARCH USE ONLY. NOT FOR USE IN DIAGNOSTIC OR THERAPEUTIC PROCEDURES'.