

BFSP1 antibody - N-terminal region

Rabbit Polyclonal Antibody

Catalog # AI11734

Product Information

Application	WB
Primary Accession	Q12934
Other Accession	NM_001195 , NP_001186
Reactivity	Human, Mouse, Rat, Rabbit, Pig, Dog, Bovine, Sheep, Yeast
Predicted	Human, Mouse, Rat, Rabbit, Pig, Dog, Bovine
Host	Rabbit
Clonality	Polyclonal
Calculated MW	74544

Additional Information

Gene ID	631
Alias Symbol	CP115, CP94, FILENSIN, LIFL-H
Other Names	Filensin, Beaded filament structural protein 1, Lens fiber cell beaded-filament structural protein CP 115, CP115, Lens intermediate filament-like heavy, LIFL-H, BFSP1
Format	Liquid. Purified antibody supplied in 1x PBS buffer with 0.09% (w/v) sodium azide and 2% sucrose.
Reconstitution & Storage	Add 50 ul of distilled water. Final anti-BFSP1 antibody concentration is 1 mg/ml in PBS buffer with 2% sucrose. For longer periods of storage, store at 20°C. Avoid repeat freeze-thaw cycles.
Precautions	BFSP1 antibody - N-terminal region is for research use only and not for use in diagnostic or therapeutic procedures.

Protein Information

Name	BFSP1
Function	Required for the correct formation of lens intermediate filaments as part of a complex composed of BFSP1, BFSP2 and CRYAA (PubMed: 28935373). Involved in altering the calcium regulation of MIP water permeability (PubMed: 30790544).
Cellular Location	Cell membrane {ECO:0000250 UniProtKB:Q06002}; Peripheral membrane protein {ECO:0000250 UniProtKB:Q06002}; Cytoplasmic side {ECO:0000250 UniProtKB:Q06002}. Cytoplasm {ECO:0000250 UniProtKB:Q02435}. Cytoplasm, cytoskeleton

{ECO:0000250|UniProtKB:Q06002}. Cytoplasm, cell cortex
{ECO:0000250|UniProtKB:Q06002}

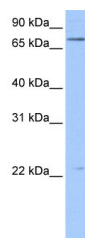
Tissue Location

Expressed in the cortex and nucleus of the retina lens (at protein level).

References

Ramachandran,R.D., Hum. Genet. 121 (3-4), 475-482 (2007)Reconstitution and Storage:For short term use, store at 2-8C up to 1 week. For long term storage, store at -20C in small aliquots to prevent freeze-thaw cycles.

Images



WB Suggested Anti-BFSP1 Antibody Titration: 0.2-1 µg/ml
Positive Control: Hela cell lysate

Please note: All products are 'FOR RESEARCH USE ONLY. NOT FOR USE IN DIAGNOSTIC OR THERAPEUTIC PROCEDURES'.