

Aebp2 antibody - C-terminal region

Rabbit Polyclonal Antibody

Catalog # AI11651

Product Information

Application	WB
Primary Accession	Q91YQ3
Other Accession	NM_145473 , NP_663448
Reactivity	Human, Mouse, Rat, Rabbit, Pig, Dog, Horse, Bovine
Predicted	Human, Mouse, Rat, Rabbit, Pig, Chicken, Bovine
Host	Rabbit
Clonality	Polyclonal
Calculated MW	16853

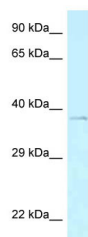
Additional Information

Gene ID	105859
Alias Symbol	AU023766, B230313N05Rik
Other Names	Cold shock domain-containing protein C2, RNA-binding protein PIPPIn, Csdc2, Pippin
Format	Liquid. Purified antibody supplied in 1x PBS buffer with 0.09% (w/v) sodium azide and 2% sucrose.
Reconstitution & Storage	Add 50 ul of distilled water. Final anti-Aebp2 antibody concentration is 1 mg/ml in PBS buffer with 2% sucrose. For longer periods of storage, store at 20°C. Avoid repeat freeze-thaw cycles.
Precautions	Aebp2 antibody - C-terminal region is for research use only and not for use in diagnostic or therapeutic procedures.

Protein Information

Name	Csdc2
Synonyms	Pippin
Function	RNA-binding factor which binds specifically to the very 3'-UTR ends of both histone H1 and H3.3 mRNAs, encompassing the polyadenylation signal. Might play a central role in the negative regulation of histone variant synthesis in the developing brain (By similarity).
Cellular Location	Nucleus. Cytoplasm. Note=PIPPIn-RNA complexes are located to the nucleus.

Images



WB Suggested Anti-Aebp2 Antibody Titration: 1.0 µg/ml
Positive Control: Mouse Spleen

Please note: All products are 'FOR RESEARCH USE ONLY. NOT FOR USE IN DIAGNOSTIC OR THERAPEUTIC PROCEDURES'.