

ZNF655 antibody - middle region

Rabbit Polyclonal Antibody

Catalog # AI11623

Product Information

Application	WB
Primary Accession	Q8N720
Other Accession	NM_138494 , NP_612503
Reactivity	Human, Mouse, Rat, Rabbit, Dog, Horse, Bovine
Predicted	Rabbit
Host	Rabbit
Clonality	Polyclonal
Calculated MW	57407

Additional Information

Gene ID	79027
Alias Symbol Other Names	DKFZp686M1631, FLJ23461, MGC10859, MGC16203, MGC5521, VIK, VIK-1 Zinc finger protein 655, Vav-interacting Krueppel-like protein, ZNF655, VIK
Format	Liquid. Purified antibody supplied in 1x PBS buffer with 0.09% (w/v) sodium azide and 2% sucrose.
Reconstitution & Storage	Add 50 ul of distilled water. Final anti-ZNF655 antibody concentration is 1 mg/ml in PBS buffer with 2% sucrose. For longer periods of storage, store at 20°C. Avoid repeat freeze-thaw cycles.
Precautions	ZNF655 antibody - middle region is for research use only and not for use in diagnostic or therapeutic procedures.

Protein Information

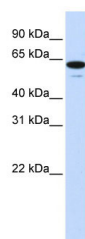
Name	ZNF655 {ECO:0000303 PubMed:38906142, ECO:0000312 HGNC:HGNC:30899}
Function	Probable transcription factor.
Cellular Location	Nucleus.

References

Thompson,E.E., (2006) Pharmacogenomics J. 6 (2), 105-114
Reconstitution and Storage:For short term use, store at 2-8C up to 1 week. For long term storage, store at -20C in small aliquots to prevent freeze-thaw

cycles.

Images



WB Suggested Anti-ZNF655 Antibody Titration: 0.2-1
µg/ml
ELISA Titer: 1:62500
Positive Control: Human brain

Please note: All products are 'FOR RESEARCH USE ONLY. NOT FOR USE IN DIAGNOSTIC OR THERAPEUTIC PROCEDURES'.