

# PER2 antibody - middle region

Rabbit Polyclonal Antibody  
Catalog # AI11578

## Product Information

---

<b>Application</b>	WB
<b>Primary Accession</b>	<a href="#">O15055</a>
<b>Other Accession</b>	<a href="#">NM_022817</a> , <a href="#">NP_073728</a>
<b>Reactivity</b>	Human, Mouse, Rat, Horse
<b>Predicted</b>	Human, Horse
<b>Host</b>	Rabbit
<b>Clonality</b>	Polyclonal
<b>Calculated MW</b>	136 KDa

## Additional Information

---

<b>Alias Symbol</b>	FASPS, KIAA0347
<b>Other Names</b>	Period circadian protein homolog 2, hPER2, Circadian clock protein PERIOD 2, PER2, KIAA0347
<b>Format</b>	Liquid. Purified antibody supplied in 1x PBS buffer with 0.09% (w/v) sodium azide and 2% sucrose.
<b>Reconstitution &amp; Storage</b>	Add 50 ul of distilled water. Final anti-PER2 antibody concentration is 1 mg/ml in PBS buffer with 2% sucrose. For longer periods of storage, store at 20°C. Avoid repeat freeze-thaw cycles.
<b>Precautions</b>	PER2 antibody - middle region is for research use only and not for use in diagnostic or therapeutic procedures.

## Protein Information

---

## References

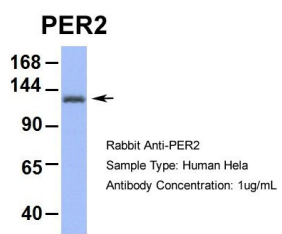
---

Gery,S., (2007) Oncogene 26 (57), 7916-7920 Reconstitution and Storage:For short term use, store at 2-8C up to 1 week. For long term storage, store at -20C in small aliquots to prevent freeze-thaw cycles.

## Images

---

Host:Rabbit  
Target Name:PER2  
Sample Tissue:Human Hela



Antibody Dilution: 1.0 $\mu$ g/ml

Please note: All products are 'FOR RESEARCH USE ONLY. NOT FOR USE IN DIAGNOSTIC OR THERAPEUTIC PROCEDURES'.