

ZFR antibody - C-terminal region

Rabbit Polyclonal Antibody

Catalog # AI11516

Product Information

Application	WB
Primary Accession	Q6P5A3
Other Accession	NM_016107 , AAH62986
Reactivity	Human, Mouse, Rat, Rabbit, Zebrafish, Dog, Horse, Bovine
Predicted	Human, Mouse, Rabbit, Dog, Horse, Bovine
Host	Rabbit
Clonality	Polyclonal
Calculated MW	67 KDa

Additional Information

Alias Symbol	ZFR1
Format	Liquid. Purified antibody supplied in 1x PBS buffer with 0.09% (w/v) sodium azide and 2% sucrose.
Reconstitution & Storage	Add 50 ul of distilled water. Final anti-ZFR antibody concentration is 1 mg/ml in PBS buffer with 2% sucrose. For longer periods of storage, store at 20°C. Avoid repeat freeze-thaw cycles.
Precautions	ZFR antibody - C-terminal region is for research use only and not for use in diagnostic or therapeutic procedures.

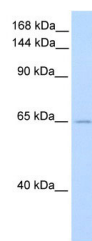
Protein Information

References

Strausberg, R., (2003) Direct Submission Reconstitution and Storage: For short term use, store at 2-8°C up to 1 week. For long term storage, store at -20°C in small aliquots to prevent freeze-thaw cycles. Publications: Tucholska, M., Florentinus, A., Williams, D. & Marshall, J. G. The endogenous peptides of normal human serum extracted from the acetonitrile-insoluble precipitate using modified aqueous buffer with analysis by LC-ESI-Paul ion trap and Qq-TOF. J. Proteomics 73, 1254-69 (2010). WB, Rat, Human, Mouse, Dog, Bovine, H, Rabbit, Zebrafish 20211283

Images

WB Suggested Anti-ZFR Antibody Titration: 0.2-1 µg/ml
ELISA Titer: 1:312500



Positive Control: Human brain

Please note: All products are 'FOR RESEARCH USE ONLY. NOT FOR USE IN DIAGNOSTIC OR THERAPEUTIC PROCEDURES'.