

Zfr antibody - N-terminal region

Rabbit Polyclonal Antibody

Catalog # AI11515

Product Information

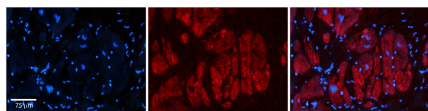
Application	WB
Primary Accession	B2RUG7
Other Accession	NM_011767 , NP_035897
Reactivity	Human, Mouse, Rat, Rabbit, Zebrafish, Dog
Predicted	Human, Mouse, Rat, Rabbit, Zebrafish, Dog
Host	Rabbit
Clonality	Polyclonal
Calculated MW	114 KDa

Additional Information

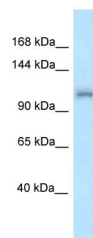
Alias Symbol	C920030H05Rik, MGC176100
Format	Liquid. Purified antibody supplied in 1x PBS buffer with 0.09% (w/v) sodium azide and 2% sucrose.
Reconstitution & Storage	Add 50 ul of distilled water. Final anti-Zfr antibody concentration is 1 mg/ml in PBS buffer with 2% sucrose. For longer periods of storage, store at 20°C. Avoid repeat freeze-thaw cycles.
Precautions	Zfr antibody - N-terminal region is for research use only and not for use in diagnostic or therapeutic procedures.

Protein Information

Images



Rabbit Anti-Zfr Antibody
Catalog Number: AI11515
Formalin Fixed Paraffin Embedded Tissue: Human Adult heart
Observed Staining: Cytoplasmic
Primary Antibody
Concentration: 1:600
Secondary Antibody: Donkey anti-Rabbit-Cy2/3
Secondary Antibody
Concentration: 1:200
Magnification: 20X
Exposure Time: 0.5 2.0 sec
Protocol located in Reviews and Data.



WB Suggested Anti-Zfr Antibody Titration: 1.0 µg/ml
Positive Control: Mouse Liver

Please note: All products are 'FOR RESEARCH USE ONLY. NOT FOR USE IN DIAGNOSTIC OR THERAPEUTIC PROCEDURES'.