

KLHL5 antibody - N-terminal region

Rabbit Polyclonal Antibody

Catalog # AI11512

Product Information

Application	WB
Primary Accession	Q96PQ7
Other Accession	NM_001007075 , NP_001007076
Reactivity	Human, Mouse, Rat, Rabbit, Zebrafish, Pig, Dog, Horse, Bovine
Predicted	Human, Mouse, Rat, Rabbit, Bovine
Host	Rabbit
Clonality	Polyclonal
Calculated MW	79 KDa

Additional Information

Other Names	Kelch-like protein 5, KLHL5
Format	Liquid. Purified antibody supplied in 1x PBS buffer with 0.09% (w/v) sodium azide and 2% sucrose.
Reconstitution & Storage	Add 50 ul of distilled water. Final anti-KLHL5 antibody concentration is 1 mg/ml in PBS buffer with 2% sucrose. For longer periods of storage, store at 20°C. Avoid repeat freeze-thaw cycles.
Precautions	KLHL5 antibody - N-terminal region is for research use only and not for use in diagnostic or therapeutic procedures.

Protein Information

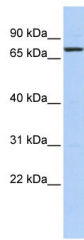
References

Hillier, L.W., (2005) Nature 434 (7034), 724-731 Reconstitution and Storage: For short term use, store at 2-8C up to 1 week. For long term storage, store at -20C in small aliquots to prevent freeze-thaw cycles. Publications: Nagalla, S. et al. Platelet microRNA-mRNA coexpression profiles correlate with platelet reactivity. Blood 117, 5189-97 (2011). WB, Mouse, Bovine, Dog, Pig, H, Guinea pig, Rat, Human, Rabbit, Zebrafish 21415270

Images

WB Suggested Anti-KLHL5 Antibody Titration: 0.2-1 µg/ml
ELISA Titer: 1:1562500

Positive Control: Hela cell lysate



Please note: All products are 'FOR RESEARCH USE ONLY. NOT FOR USE IN DIAGNOSTIC OR THERAPEUTIC PROCEDURES'.