

CORO1A antibody - N-terminal region

Rabbit Polyclonal Antibody

Catalog # AI11473

Product Information

Application	WB
Primary Accession	Q2YD73
Other Accession	NM_007074 , NP_009005
Reactivity	Human, Mouse, Rat, Rabbit, Zebrafish, Pig, Dog, Horse, Bovine
Predicted	Human, Mouse, Zebrafish, Pig, Dog, Horse
Host	Rabbit
Clonality	Polyclonal
Calculated MW	51 KDa

Additional Information

Alias Symbol	p57, TACO, CLABP, HCORO1, CLIPINA
Format	Liquid. Purified antibody supplied in 1x PBS buffer with 0.09% (w/v) sodium azide and 2% sucrose.
Reconstitution & Storage	Add 100 ul of distilled water. Final anti-CORO1A antibody concentration is 1 mg/ml in PBS buffer with 2% sucrose. For longer periods of storage, store at 20°C. Avoid repeat freeze-thaw cycles.
Precautions	CORO1A antibody - N-terminal region is for research use only and not for use in diagnostic or therapeutic procedures.

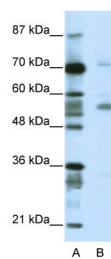
Protein Information

References

Anand,P.K. (2005) FEMS Microbiol. Lett. 250 (1), 137-144
Reconstitution and Storage: For short term use, store at 2-8C up to 1 week. For long term storage, store at -20C in small aliquots to prevent freeze-thaw cycles.

Images

WB Suggested Anti-CORO1A Antibody Titration: 2.5µg/ml
ELISA Titer: 1:312500
Positive Control: Jurkat cell lysate
CORO1A is supported by BioGPS gene expression data to be expressed in Jurkat



Please note: All products are 'FOR RESEARCH USE ONLY. NOT FOR USE IN DIAGNOSTIC OR THERAPEUTIC PROCEDURES'.