

MLLT3 antibody - C-terminal region

Rabbit Polyclonal Antibody

Catalog # AI11422

Product Information

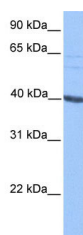
Application	WB
Primary Accession	Q6LEQ8
Other Accession	NM_004529 , BAA04090
Reactivity	Human, Mouse, Rat, Rabbit, Zebrafish, Dog, Horse, Bovine
Predicted	Human, Mouse, Rat, Rabbit, Zebrafish, Pig, Chicken, Bovine
Host	Rabbit
Clonality	Polyclonal
Calculated MW	37 kDa

Additional Information

Alias Symbol	AF9, FLJ2035, YEATS3
Format	Liquid. Purified antibody supplied in 1x PBS buffer with 0.09% (w/v) sodium azide and 2% sucrose.
Reconstitution & Storage	Add 50 ul of distilled water. Final anti-MLLT3 antibody concentration is 1 mg/ml in PBS buffer with 2% sucrose. For longer periods of storage, store at 20°C. Avoid repeat freeze-thaw cycles.
Precautions	MLLT3 antibody - C-terminal region is for research use only and not for use in diagnostic or therapeutic procedures.

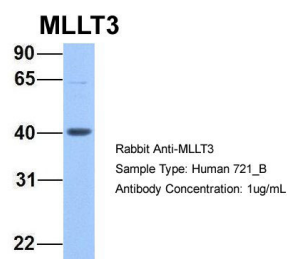
Protein Information

Images

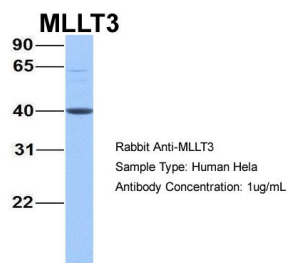


WB Suggested Anti-MLLT3 Antibody Titration: 0.2-1 µg/ml
Positive Control: HepG2 cell lysate

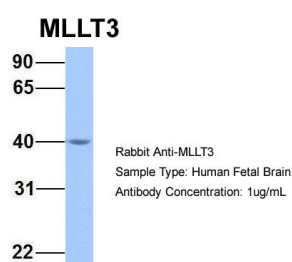
Host: Rabbit
Target Name: MLLT3



Sample Tissue:721_B
Antibody Dilution: 1.0µg/mlMLLT3 is strongly supported
by BioGPS gene expression data to be expressed in
Human 721_B cells



Host:Rabbit
Target Name:MLLT3
Sample Tissue:Hela
Antibody Dilution: 1.0µg/mlMLLT3 is supported by
BioGPS gene expression data to be expressed in HeLa



Host:Rabbit
Target Name:MLLT3
Sample Tissue:Human Fetal Brain
Antibody Dilution: 1.0µg/ml

Please note: All products are 'FOR RESEARCH USE ONLY. NOT FOR USE IN DIAGNOSTIC OR THERAPEUTIC PROCEDURES'.