

ZFX Antibody - C-terminal region

Rabbit Polyclonal Antibody

Catalog # AI11389

Product Information

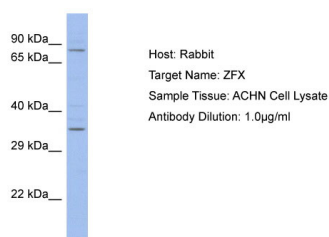
Application	WB
Primary Accession	E9PEP7
Reactivity	Human, Mouse, Rat, Rabbit, Zebrafish, Pig, Dog, Horse, Bovine
Predicted	Human, Mouse, Rat, Rabbit, Zebrafish, Pig, Bovine
Host	Rabbit
Clonality	Polyclonal
Calculated MW	83 kDa

Additional Information

Format	Liquid. Purified antibody supplied in 1x PBS buffer with 0.09% (w/v) sodium azide and 2% sucrose.
Reconstitution & Storage	Add 50 μ l of distilled water. Final Anti-ZFX antibody concentration is 1 mg/ml in PBS buffer with 2% sucrose. For longer periods of storage, store at -20°C. Avoid repeat freeze-thaw cycles.
Precautions	ZFX Antibody - C-terminal region is for research use only and not for use in diagnostic or therapeutic procedures.

Protein Information

Images



Host: Rabbit
Target Name: ZFX
Sample Tissue: ACHN Whole cell lysate
Antibody Dilution: 1.0 μ g/ml

Please note: All products are 'FOR RESEARCH USE ONLY. NOT FOR USE IN DIAGNOSTIC OR THERAPEUTIC PROCEDURES'.