

TEAD4 antibody - C-terminal region

Rabbit Polyclonal Antibody

Catalog # AI11385

Product Information

Application	WB, IHC
Primary Accession	Q96BK2
Other Accession	NM_003213 , NP_003204
Reactivity	Human, Mouse, Rat, Rabbit, Zebrafish, Pig, Dog, Horse, Bovine
Predicted	Human, Mouse, Pig, Bovine
Host	Rabbit
Clonality	Polyclonal
Calculated MW	48 KDa

Additional Information

Alias Symbol	TEF3, RTEF1, TEF-3, EFTR-2, TEF-1, TCF13L1, hRTEF-1B
Format	Liquid. Purified antibody supplied in 1x PBS buffer with 0.09% (w/v) sodium azide and 2% sucrose.
Reconstitution & Storage	Add 50 ul of distilled water. Final anti-TEAD4 antibody concentration is 1 mg/ml in PBS buffer with 2% sucrose. For longer periods of storage, store at 20°C. Avoid repeat freeze-thaw cycles.
Precautions	TEAD4 antibody - C-terminal region is for research use only and not for use in diagnostic or therapeutic procedures.

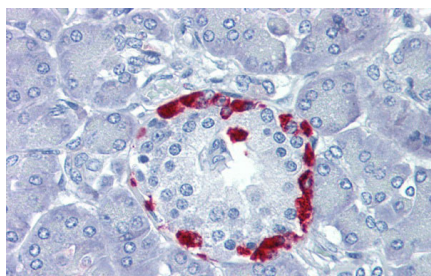
Protein Information

References

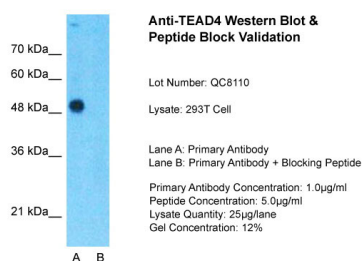
Chen, H.H., et al., (2004) Circulation 110 (19), 2980-2987
Reconstitution and Storage: For short term use, store at 2-8°C up to 1 week. For long term storage, store at -20°C in small aliquots to prevent freeze-thaw cycles.
Publications: Ribas, R. et al. Members of the TEAD family of transcription factors regulate the expression of Myf5 in ventral somitic compartments. Dev. Biol. 355, 372-80 (2011).
WB, IHC, ChIP, Pig, Human, Rat, Bovine, Dog, H, Rabbit, Guinea pig, Mouse, Zebrafish
21527258

Images

Immunohistochemistry with Human Pancreas lysate tissue at an antibody concentration of 5.0 µg/ml using anti-TEAD4 antibody (AI11385)



WB Suggested Anti-TEAD4 Antibody Titration: 0.2-1 µg/ml
 ELISA Titer: 1:1562500
 Positive Control: 293T cell lysate
 TEAD4 is supported by BioGPS gene expression data to be expressed in HEK293T



Host: Rabbit
 Target Name: TEAD4
 Sample Tissue: 293T
 Lane A: Primary Antibody
 Lane B: Primary Antibody + Blocking Peptide
 Primary Antibody
 Concentration: 1 µg/ml
 Peptide Concentration: 5 µg/ml
 Lysate Quantity: 25 µg/lane/lane Gel
 Concentration: 0.12

Please note: All products are 'FOR RESEARCH USE ONLY. NOT FOR USE IN DIAGNOSTIC OR THERAPEUTIC PROCEDURES'.