

PSMC2 antibody - N-terminal region

Rabbit Polyclonal Antibody

Catalog # AI11375

Product Information

Application	WB
Primary Accession	Q3LIA5
Other Accession	NM_002803 , NP_002794
Reactivity	Human, Mouse, Rat, Rabbit, Zebrafish, Pig, Dog, Horse, Bovine
Predicted	Mouse, Rat, Rabbit, Zebrafish, Pig, Chicken, Horse
Host	Rabbit
Clonality	Polyclonal
Calculated MW	49 KDa

Additional Information

Alias Symbol	S7, MSS1, Nbla10058
Format	Liquid. Purified antibody supplied in 1x PBS buffer with 0.09% (w/v) sodium azide and 2% sucrose.
Reconstitution & Storage	Add 100 ul of distilled water. Final anti-PSMC2 antibody concentration is 1 mg/ml in PBS buffer with 2% sucrose. For longer periods of storage, store at 20°C. Avoid repeat freeze-thaw cycles.
Precautions	PSMC2 antibody - N-terminal region is for research use only and not for use in diagnostic or therapeutic procedures.

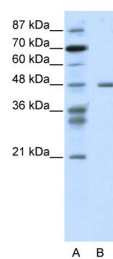
Protein Information

References

Bouwmeester, T., et al., (2004) Nat. Cell Biol. 6 (2), 97-105
Reconstitution and Storage: For short term use, store at 2-8°C up to 1 week. For long term storage, store at -20°C in small aliquots to prevent freeze-thaw cycles.

Images

WB Suggested Anti-PSMC2 Antibody Titration: 1.25 µg/ml
ELISA Titer: 1:1562500
Positive Control: Jurkat cell lysate



Please note: All products are 'FOR RESEARCH USE ONLY. NOT FOR USE IN DIAGNOSTIC OR THERAPEUTIC PROCEDURES'.