

# RUNX1 antibody - middle region

Rabbit Polyclonal Antibody

Catalog # AI11357

## Product Information

Application	WB
Primary Accession	<a href="#">B2RMS4</a>
Other Accession	<a href="#">NM_001754</a> , <a href="#">NP_001745</a>
Reactivity	Human, Mouse, Rat, Rabbit, Zebrafish, Pig, Dog, Horse, Bovine
Predicted	Human, Mouse, Rat, Zebrafish, Pig, Dog, Horse, Bovine
Host	Rabbit
Clonality	Polyclonal
Calculated MW	52 KDa

## Additional Information

Alias Symbol	AML1, AML1-EVI-1, AMLCR1, CBFA2, EVI-1, PEBP2aB
Format	Liquid. Purified antibody supplied in 1x PBS buffer with 0.09% (w/v) sodium azide and 2% sucrose.
Reconstitution & Storage	Add 50 ul of distilled water. Final anti-RUNX1 antibody concentration is 1 mg/ml in PBS buffer with 2% sucrose. For longer periods of storage, store at 20°C. Avoid repeat freeze-thaw cycles.
Precautions	RUNX1 antibody - middle region is for research use only and not for use in diagnostic or therapeutic procedures.

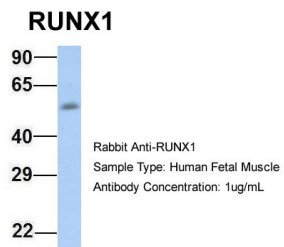
## Protein Information

## References

Takeshita, M., (2008) Leukemia 22 (6), 1241-1249 Reconstitution and Storage: For short term use, store at 2-8C up to 1 week. For long term storage, store at -20C in small aliquots to prevent freeze-thaw cycles.

## Images

WB Suggested Anti-RUNX1 Antibody Titration: 0.2-1 µg/ml  
ELISA Titer: 1:62500  
Positive Control: Jurkat cell lysate  
RUNX1 is strongly supported by BioGPS gene expression data to be expressed in Human Jurkat cells



Host:Rabbit  
Target Name:RUNX1  
Sample Tissue:Human Fetal Muscle  
Antibody Dilution: 1.0µg/ml

Please note: All products are 'FOR RESEARCH USE ONLY. NOT FOR USE IN DIAGNOSTIC OR THERAPEUTIC PROCEDURES'.