

Zfp872 antibody - middle region

Rabbit Polyclonal Antibody

Catalog # AI11316

Product Information

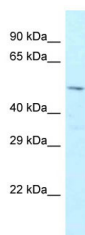
Application	WB
Primary Accession	Q3UVL3
Other Accession	NM_001033813 , NP_001028985
Reactivity	Human, Mouse, Rat, Zebrafish, Pig, Horse, Bovine
Predicted	Mouse
Host	Rabbit
Clonality	Polyclonal
Calculated MW	54 kDa

Additional Information

Alias Symbol	9530015I07Rik
Format	Liquid. Purified antibody supplied in 1x PBS buffer with 0.09% (w/v) sodium azide and 2% sucrose.
Reconstitution & Storage	Add 50 ul of distilled water. Final anti-Zfp872 antibody concentration is 1 mg/ml in PBS buffer with 2% sucrose. For longer periods of storage, store at 20°C. Avoid repeat freeze-thaw cycles.
Precautions	Zfp872 antibody - middle region is for research use only and not for use in diagnostic or therapeutic procedures.

Protein Information

Images



WB Suggested Anti-Zfp872 Antibody Titration: 1.0 µg/ml
Positive Control: Mouse Spleen