

ZFP62 antibody - middle region

Rabbit Polyclonal Antibody

Catalog # AI11313

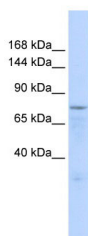
Product Information

Application	WB
Other Accession	XM_931640 , XP_936733
Reactivity	Human, Mouse, Rat, Rabbit, Zebrafish, Pig, Dog, Horse, Bovine
Predicted	Human, Mouse, Rabbit, Pig, Horse, Bovine
Host	Rabbit
Clonality	Polyclonal
Calculated MW	80 kDa

Additional Information

Alias Symbol	FLJ34057, FLJ34231, ZET, ZNF755
Format	Liquid. Purified antibody supplied in 1x PBS buffer with 0.09% (w/v) sodium azide and 2% sucrose.
Reconstitution & Storage	Add 50 ul of distilled water. Final anti-ZFP62 antibody concentration is 1 mg/ml in PBS buffer with 2% sucrose. For longer periods of storage, store at 20°C. Avoid repeat freeze-thaw cycles.
Precautions	ZFP62 antibody - middle region is for research use only and not for use in diagnostic or therapeutic procedures.

Images



WB Suggested Anti-ZFP62 Antibody Titration: 0.2-1 µg/ml
ELISA Titer: 1:312500
Positive Control: 293T cell lysate

Please note: All products are 'FOR RESEARCH USE ONLY. NOT FOR USE IN DIAGNOSTIC OR THERAPEUTIC PROCEDURES'.