

Ebf4 antibody - middle region

Rabbit Polyclonal Antibody

Catalog # AI11236

Product Information

Application	WB
Primary Accession	Q8K4J2
Other Accession	NM_152993 , NP_694538
Reactivity	Human, Mouse, Rat, Rabbit, Pig, Dog, Horse, Bovine
Predicted	Mouse, Rat, Rabbit, Pig, Bovine
Host	Rabbit
Clonality	Polyclonal
Calculated MW	64624

Additional Information

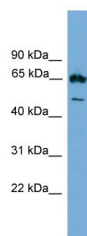
Gene ID	228598
Alias Symbol	Ebf3, O/E-4, Olf-1
Other Names	Transcription factor COE4, Early B-cell factor 4, EBF-4, Olf-1/EBF-like 4, O/E-4, OE-4, Ebf4, Coe4
Format	Liquid. Purified antibody supplied in 1x PBS buffer with 0.09% (w/v) sodium azide and 2% sucrose.
Reconstitution & Storage	Add 50 ul of distilled water. Final anti-Ebf4 antibody concentration is 1 mg/ml in PBS buffer with 2% sucrose. For longer periods of storage, store at 20°C. Avoid repeat freeze-thaw cycles.
Precautions	Ebf4 antibody - middle region is for research use only and not for use in diagnostic or therapeutic procedures.

Protein Information

Name	Ebf4
Synonyms	Coe4
Function	Transcription factor (PubMed: 12139918). Positively modulates transcription, perhaps less strongly than other early B cell factor/EBF family proteins (PubMed: 12139918). Binds an EBF1/Olf-1 consensus site in vitro (PubMed: 12139918).
Cellular Location	Nucleus.
Tissue Location	Expressed in the olfactory epithelium, including in both neuronal and basal

cell layers (PubMed:12139918, PubMed:35939714) Absent in the vomeronasal organ (PubMed:12139918). Absent from NK cells and CD8(+) T cells (PubMed:35939714).

Images



WB Suggested Anti-Ebf4 Antibody Titration: 0.2-1 µg/ml
ELISA Titer: 1:1562500
Positive Control: SP2/0 cell lysate

Please note: All products are 'FOR RESEARCH USE ONLY. NOT FOR USE IN DIAGNOSTIC OR THERAPEUTIC PROCEDURES'.