

Vsx1 antibody - N-terminal region

Rabbit Polyclonal Antibody

Catalog # AI11219

Product Information

Application	WB
Primary Accession	Q91V10
Other Accession	NM_054068 , NP_473409
Reactivity	Mouse, Rat
Predicted	Mouse, Rat
Host	Rabbit
Clonality	Polyclonal
Calculated MW	38755

Additional Information

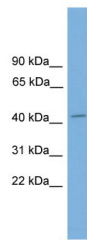
Gene ID	114889
Alias Symbol	CHX10-like
Other Names	Visual system homeobox 1, Homeodomain protein RINX, Retinal inner nuclear layer homeobox protein, Transcription factor VSX1, Vsx1, Rinx
Format	Liquid. Purified antibody supplied in 1x PBS buffer with 0.09% (w/v) sodium azide and 2% sucrose.
Reconstitution & Storage	Add 50 ul of distilled water. Final anti-Vsx1 antibody concentration is 1 mg/ml in PBS buffer with 2% sucrose. For longer periods of storage, store at 20°C. Avoid repeat freeze-thaw cycles.
Precautions	Vsx1 antibody - N-terminal region is for research use only and not for use in diagnostic or therapeutic procedures.

Protein Information

Name	Vsx1
Synonyms	Rinx
Function	Binds to the 37-bp core of the locus control region (LCR) of the red/green visual pigment gene cluster (By similarity). May regulate the activity of the LCR and the cone opsin genes at earlier stages of development (By similarity). Dispensable in early retinal development (PubMed: 17919464).
Cellular Location	Nucleus.
Tissue Location	Expressed in the postnatal retina (at protein level) (PubMed: 17919464). In the

adult, expressed exclusively in the cells of the neural retina with expression restricted to postnatal cone bipolar interneurons (PubMed:15838724).

Images



WB Suggested Anti-Vsx1 Antibody Titration: 0.2-1 µg/ml
Positive Control: Mouse Spleen

Please note: All products are 'FOR RESEARCH USE ONLY. NOT FOR USE IN DIAGNOSTIC OR THERAPEUTIC PROCEDURES'.