

Plbd1 antibody - N-terminal region

Rabbit Polyclonal Antibody

Catalog # AI11191

Product Information

Application	WB
Primary Accession	Q8VCI0
Other Accession	NM_025806 , NP_080082
Reactivity	Human, Mouse, Rat, Rabbit, Zebrafish, Pig, Dog, Horse, Bovine
Predicted	Human, Rabbit, Bovine
Host	Rabbit
Clonality	Polyclonal
Calculated MW	62998

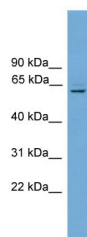
Additional Information

Gene ID	66857
Alias Symbol	1100001H23Rik
Other Names	Phospholipase B-like 1, 3.1.1.-, LAMA-like protein 1, Lamina ancestor homolog 1, Phospholipase B domain-containing protein 1, Phospholipase B-like 1 chain A, Phospholipase B-like 1 chain B, Phospholipase B-like 1 chain C, Plbd1
Format	Liquid. Purified antibody supplied in 1x PBS buffer with 0.09% (w/v) sodium azide and 2% sucrose.
Reconstitution & Storage	Add 50 ul of distilled water. Final anti-Plbd1 antibody concentration is 1 mg/ml in PBS buffer with 2% sucrose. For longer periods of storage, store at 20°C. Avoid repeat freeze-thaw cycles.
Precautions	Plbd1 antibody - N-terminal region is for research use only and not for use in diagnostic or therapeutic procedures.

Protein Information

Name	Plbd1
Function	Exhibits weak phospholipase activity, acting on various phospholipids, including phosphatidylcholine, phosphatidylinositol, phosphatidylethanolamine and lysophospholipids. However, in view of the small size of the putative binding pocket, it has been proposed that it may act rather as an amidase or a peptidase (By similarity).
Cellular Location	Lysosome.

Images



WB Suggested Anti-Plbd1 Antibody Titration: 0.2-1 $\mu\text{g/ml}$
Positive Control: Mouse Heart

Please note: All products are 'FOR RESEARCH USE ONLY. NOT FOR USE IN DIAGNOSTIC OR THERAPEUTIC PROCEDURES'.