

TSG101 antibody - middle region

Rabbit Polyclonal Antibody

Catalog # AI11181

Product Information

Application	WB, IHC
Primary Accession	Q61187
Other Accession	NM_021884 , NP_068684
Reactivity	Human, Mouse, Rat, Rabbit, Goat, Dog, Horse, Bovine
Predicted	Human, Mouse, Rat, Rabbit, Chicken, Goat, Dog, Horse, Bovine
Host	Rabbit
Clonality	Polyclonal
Calculated MW	44124

Additional Information

Gene ID	22088
Alias Symbol	CC2, AI255943
Other Names	Tumor susceptibility gene 101 protein, ESCRT-I complex subunit TSG101, Tsg101
Format	Liquid. Purified antibody supplied in 1x PBS buffer with 0.09% (w/v) sodium azide and 2% sucrose.
Reconstitution & Storage	Add 100 ul of distilled water. Final anti-TSG101 antibody concentration is 1 mg/ml in PBS buffer with 2% sucrose. For longer periods of storage, store at 20°C. Avoid repeat freeze-thaw cycles.
Precautions	TSG101 antibody - middle region is for research use only and not for use in diagnostic or therapeutic procedures.

Protein Information

Name	Tsg101
Function	Component of the ESCRT-I complex, a regulator of vesicular trafficking process. Binds to ubiquitinated cargo proteins and is required for the sorting of endocytic ubiquitinated cargos into multivesicular bodies (MVBs). Mediates the association between the ESCRT-0 and ESCRT-I complex. Required for completion of cytokinesis; the function requires CEP55. May be involved in cell growth and differentiation. Acts as a negative growth regulator. Required for the exosomal release of SDCBP, CD63 and syndecan (By similarity). It may also play a role in the extracellular release of microvesicles that differ from the exosomes (By similarity).

Cellular Location

Cytoplasm {ECO:0000250|UniProtKB:Q99816}. Early endosome membrane {ECO:0000250|UniProtKB:Q99816}; Peripheral membrane protein {ECO:0000250|UniProtKB:Q99816}; Cytoplasmic side {ECO:0000250|UniProtKB:Q99816}. Late endosome membrane {ECO:0000250|UniProtKB:Q99816}; Peripheral membrane protein {ECO:0000250|UniProtKB:Q99816}. Cytoplasm, cytoskeleton, microtubule organizing center, centrosome {ECO:0000250|UniProtKB:Q99816}. Midbody, Midbody ring {ECO:0000250|UniProtKB:Q99816}. Nucleus {ECO:0000250|UniProtKB:Q99816}. Note=Mainly cytoplasmic. Membrane-associated when active and soluble when inactive. Nuclear localization is cell cycle-dependent. Interaction with CEP55 is required for localization to the midbody during cytokinesis {ECO:0000250|UniProtKB:Q99816}

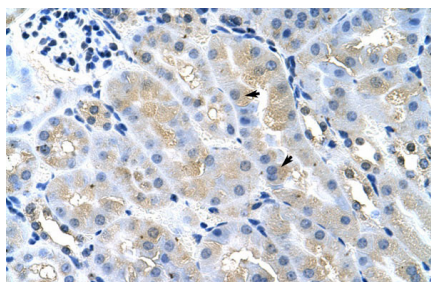
Tissue Location

Ubiquitous. Higher expression in brain and mammary gland. Lower expression in liver and tumoral tissues

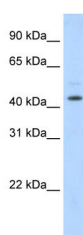
References

Stefan,M., (er) BMC Genomics 6, 157 (2005)Reconstitution and Storage:For short term use, store at 2-8C up to 1 week. For long term storage, store at -20C in small aliquots to prevent freeze-thaw cycles.

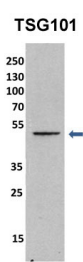
Images



Rabbit Anti-Tsg101 Antibody
Paraffin Embedded Tissue: Mouse Kidney
Cellular Data: Epithelial cells of renal tubule
Antibody Concentration: 4.0-8.0 µg/ml
Magnification: 400X



WB Suggested Anti-TSG101 Antibody Titration: 1.25µg/ml
Positive Control: NIH/3T3 cell lysate



See Immunoblot 2 Data for more information.

Sample Type: □ mouse fibroblast lusate (10ug) Primary
Dilution: □ 1:1000 (1% BSA) Secondary Dilution: □ 1:2000
(5% milk) Image
Submitted by: □ Anonymous researcher □ See Customer
Feedback tab for detailed information.

Please note: All products are 'FOR RESEARCH USE ONLY. NOT FOR USE IN DIAGNOSTIC OR THERAPEUTIC PROCEDURES'.