

MEF2B antibody - C-terminal region

Rabbit Polyclonal Antibody

Catalog # AI11066

Product Information

Application	WB
Primary Accession	Q55087
Other Accession	NM_008578 , NP_032604
Reactivity	Mouse, Rat
Predicted	Mouse, Rat
Host	Rabbit
Clonality	Polyclonal
Calculated MW	37435

Additional Information

Alias Symbol	AI451606
Other Names	Myocyte-specific enhancer factor 2B, Mef2b
Format	Liquid. Purified antibody supplied in 1x PBS buffer with 0.09% (w/v) sodium azide and 2% sucrose.
Reconstitution & Storage	Add 100 ul of distilled water. Final anti-MEF2B antibody concentration is 1 mg/ml in PBS buffer with 2% sucrose. For longer periods of storage, store at 20°C. Avoid repeat freeze-thaw cycles.
Precautions	MEF2B antibody - C-terminal region is for research use only and not for use in diagnostic or therapeutic procedures.

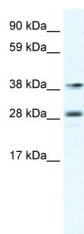
Protein Information

Name	Mef2b
Function	Transcriptional activator which binds specifically to the MEF2 element, 5'-YTA[AT](4)TAR-3', found in numerous muscle-specific genes. Activates transcription via this element. May be involved in muscle-specific and/or growth factor-related transcription.
Cellular Location	Nucleus {ECO:0000255 PROSITE-ProRule:PRU00251}.
Tissue Location	Highest expression found in embryonic heart and skeletal muscle. Low levels found in adult spleen, lung and testis while no expression is found in adult heart, brain or skeletal muscle

References

Allen,D.L., et al., (2005) J. Biol. Chem. 280 (17), 17126-17134
Reconstitution and Storage: For short term use, store at 2-8C up to 1 week. For long term storage, store at -20C in small aliquots to prevent freeze-thaw cycles.

Images



WB Suggested Anti-MEF2B Antibody Titration: 0.625µg/ml
ELISA Titer: 1:312500
Positive Control: Human Lymphnode

Please note: All products are 'FOR RESEARCH USE ONLY. NOT FOR USE IN DIAGNOSTIC OR THERAPEUTIC PROCEDURES'.