

ELF1 antibody - N-terminal region

Rabbit Polyclonal Antibody

Catalog # AI11045

Product Information

Application	WB
Primary Accession	Q60775
Other Accession	NM_007920 , NP_031946
Reactivity	Human, Mouse, Rat, Rabbit, Dog, Horse
Predicted	Human, Mouse, Rat, Rabbit
Host	Rabbit
Clonality	Polyclonal
Calculated MW	66221

Additional Information

Gene ID	13709
Alias Symbol	p70, Sts1, Elf-1, mElf-1
Other Names	ETS-related transcription factor Elf-1, E74-like factor 1, Elf1
Format	Liquid. Purified antibody supplied in 1x PBS buffer with 0.09% (w/v) sodium azide and 2% sucrose.
Reconstitution & Storage	Add 50 ul of distilled water. Final anti-ELF1 antibody concentration is 1 mg/ml in PBS buffer with 2% sucrose. For longer periods of storage, store at 20°C. Avoid repeat freeze-thaw cycles.
Precautions	ELF1 antibody - N-terminal region is for research use only and not for use in diagnostic or therapeutic procedures.

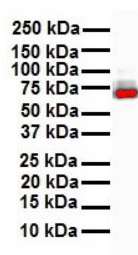
Protein Information

Name	Elf1
Function	Transcription factor that activates the LYN and BLK promoters.
Cellular Location	Nucleus.
Tissue Location	Predominantly found in hematopoietic cells. Detected in other cell types such as fibroblasts

References

Geng,Y., et al., (2005) J. Immunol. 175 (2), 1022-1029
Reconstitution and Storage: For short term use, store at 2-8C up to 1 week. For long term storage, store at -20C in small aliquots to prevent freeze-thaw cycles.

Images



WB Suggested Anti-ELF1 antibody Titration: 1 µg/ml
Sample Type: Human MCF7

Please note: All products are 'FOR RESEARCH USE ONLY. NOT FOR USE IN DIAGNOSTIC OR THERAPEUTIC PROCEDURES'.