

TRPM3 antibody - N-terminal region

Rabbit Polyclonal Antibody

Catalog # AI11027

Product Information

Application	WB
Primary Accession	Q5T8N8
Other Accession	NM_206948 , NP_996831
Reactivity	Human, Mouse, Rat, Rabbit, Zebrafish, Dog, Horse, Bovine
Predicted	Human, Mouse, Rat, Rabbit, Zebrafish, Pig, Chicken, Bovine
Host	Rabbit
Clonality	Polyclonal
Calculated MW	25 KDa

Additional Information

Alias Symbol	GON-2, MLSN2, LTRPC3
Format	Liquid. Purified antibody supplied in 1x PBS buffer with 0.09% (w/v) sodium azide and 2% sucrose.
Reconstitution & Storage	Add 50 ul of distilled water. Final anti-TRPM3 antibody concentration is 1 mg/ml in PBS buffer with 2% sucrose. For longer periods of storage, store at 20°C. Avoid repeat freeze-thaw cycles.
Precautions	TRPM3 antibody - N-terminal region is for research use only and not for use in diagnostic or therapeutic procedures.

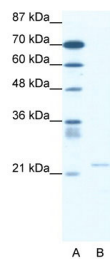
Protein Information

References

Oberwinkler, J., et al., (2005) J. Biol. Chem. 280 (23), 22540-22548
Reconstitution and Storage: For short term use, store at 2-8°C up to 1 week. For long term storage, store at -20°C in small aliquots to prevent freeze-thaw cycles.

Images

WB Suggested Anti-TRPM3 Antibody Titration: 0.2-1 µg/ml
ELISA Titer: 1:1562500
Positive Control: Jurkat cell lysate



Please note: All products are 'FOR RESEARCH USE ONLY. NOT FOR USE IN DIAGNOSTIC OR THERAPEUTIC PROCEDURES'.