

ANXA8L2 antibody - N-terminal region

Rabbit Polyclonal Antibody

Catalog # AI10998

Product Information

Application	WB
Primary Accession	Q5VT79
Other Accession	NM_001630 , NP_001621
Reactivity	Human, Mouse, Rat, Rabbit, Pig, Dog, Horse, Bovine
Predicted	Human
Host	Rabbit
Clonality	Polyclonal
Calculated MW	36879

Additional Information

Gene ID	728113
Alias Symbol	ANXA8, FLJ32754, bA145E20.2
Other Names	Annexin A8-like protein 2, ANXA8L2 {ECO:0000312 EMBL:CAH70574.1}
Format	Liquid. Purified antibody supplied in 1x PBS buffer with 0.09% (w/v) sodium azide and 2% sucrose.
Reconstitution & Storage	Add 50 ul of distilled water. Final anti-ANXA8L2 antibody concentration is 1 mg/ml in PBS buffer with 2% sucrose. For longer periods of storage, store at 20°C. Avoid repeat freeze-thaw cycles.
Precautions	ANXA8L2 antibody - N-terminal region is for research use only and not for use in diagnostic or therapeutic procedures.

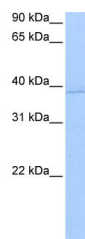
Protein Information

Name	ANXA8L1 (HGNC:23334)
-------------	--

References

Karanjawala,Z.E., (2008) Am. J. Surg. Pathol. 32 (2), 188-196 Reconstitution and Storage:For short term use, store at 2-8C up to 1 week. For long term storage, store at -20C in small aliquots to prevent freeze-thaw cycles.

Images



WB Suggested Anti-ANXA8L2 Antibody Titration: 0.2-1
µg/ml
ELISA Titer: 1:312500
Positive Control: MCF7 cell lysate

Please note: All products are 'FOR RESEARCH USE ONLY. NOT FOR USE IN DIAGNOSTIC OR THERAPEUTIC PROCEDURES'.