

HSFY1 antibody - N-terminal region

Rabbit Polyclonal Antibody

Catalog # AI10933

Product Information

| | |
|--------------------------|---|
| Application | WB |
| Primary Accession | Q96LI6 |
| Other Accession | NM_033108 , NP_149099 |
| Reactivity | Human, Mouse, Rat, Dog, Bovine |
| Predicted | Human |
| Host | Rabbit |
| Clonality | Polyclonal |
| Calculated MW | 45107 |

Additional Information

| | |
|-------------------------------------|---|
| Gene ID | 159119;86614 |
| Alias Symbol | HSFY, HSF2L, HSFY2 |
| Other Names | Heat shock transcription factor, Y-linked, Heat shock transcription factor 2-like protein, HSF2-like, HSFY1, HSF2L, HSFY |
| Format | Liquid. Purified antibody supplied in 1x PBS buffer with 0.09% (w/v) sodium azide and 2% sucrose. |
| Reconstitution & Storage | Add 100 ul of distilled water. Final anti-HSFY1 antibody concentration is 1 mg/ml in PBS buffer with 2% sucrose. For longer periods of storage, store at 20°C. Avoid repeat freeze-thaw cycles. |
| Precautions | HSFY1 antibody - N-terminal region is for research use only and not for use in diagnostic or therapeutic procedures. |

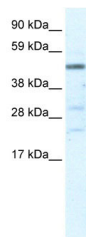
Protein Information

| | |
|--------------------------|---|
| Name | HSFY1 |
| Synonyms | HSF2L, HSFY |
| Cellular Location | Nucleus. Cytoplasm |
| Tissue Location | Testis-specific. Present in Sertoli cells and spermatogenic cells (at protein level). |

References

Shinka,T., et al., (2004) Biol. Reprod. 71 (1), 297-306
Reconstitution and Storage:For short term use, store at 2-8C up to 1 week. For long term storage, store at -20C in small aliquots to prevent freeze-thaw cycles.

Images



WB Suggested Anti-HSFY1 Antibody Titration: 5.0µg/ml
ELISA Titer: 1:62500
Positive Control: Human Liver

Please note: All products are 'FOR RESEARCH USE ONLY. NOT FOR USE IN DIAGNOSTIC OR THERAPEUTIC PROCEDURES'.