

FEV Antibody - C-terminal region

Rabbit Polyclonal Antibody
Catalog # AI10912

Product Information

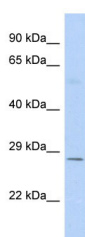
Application	WB
Primary Accession	Q99581
Other Accession	NM_017521 , NP_059991
Reactivity	Human, Mouse, Rat, Rabbit, Bovine
Predicted	Mouse, Rat, Rabbit
Host	Rabbit
Clonality	Polyclonal
Calculated MW	26 KDa

Additional Information

Alias Symbol	HSRNAFEV, PET-1
Other Names	Protein FEV, Fifth Ewing variant protein, PC12 ETS domain-containing transcription factor 1, PC12 ETS factor 1, Pet-1, FEV, PET1
Format	Liquid. Purified antibody supplied in 1x PBS buffer with 0.09% (w/v) sodium azide and 2% sucrose.
Reconstitution & Storage	Add 50 μ l of distilled water. Final Anti-FEV antibody concentration is 1 mg/ml in PBS buffer with 2% sucrose. For longer periods of storage, store at -20°C. Avoid repeat freeze-thaw cycles.
Precautions	FEV Antibody - C-terminal region is for research use only and not for use in diagnostic or therapeutic procedures.

Protein Information

Images



Host: Rabbit
Target Name: FEV
Sample Tissue: Fetal Brain Lysate
Antibody Dilution: 1.0 μ g/ml

Host: Rabbit
Target Name: FEV
Sample Tissue: Fetal Brain lysates
Antibody Dilution: 1.0 μ g/ml

Please note: All products are 'FOR RESEARCH USE ONLY. NOT FOR USE IN DIAGNOSTIC OR THERAPEUTIC PROCEDURES'.