

ZNF238 antibody - N-terminal region

Rabbit Polyclonal Antibody

Catalog # AI10884

Product Information

Application	WB
Primary Accession	Q99592
Other Accession	NM_006352 , NP_006343
Reactivity	Human, Mouse, Rat, Rabbit, Zebrafish, Dog, Horse, Bovine
Predicted	Rabbit, Chicken
Host	Rabbit
Clonality	Polyclonal
Calculated MW	58354

Additional Information

Gene ID	10472
Alias Symbol Other Names	C2H2-171, RP58, TAZ-1, ZBTB18, ZNF238 Zinc finger and BTB domain-containing protein 18, 58 kDa repressor protein, Transcriptional repressor RP58, Translin-associated zinc finger protein 1, TAZ-1, Zinc finger protein 238, Zinc finger protein C2H2-171, ZBTB18, RP58, TAZ1, ZNF238
Format	Liquid. Purified antibody supplied in 1x PBS buffer with 0.09% (w/v) sodium azide and 2% sucrose.
Reconstitution & Storage	Add 50 ul of distilled water. Final anti-ZNF238 antibody concentration is 1 mg/ml in PBS buffer with 2% sucrose. For longer periods of storage, store at 20°C. Avoid repeat freeze-thaw cycles.
Precautions	ZNF238 antibody - N-terminal region is for research use only and not for use in diagnostic or therapeutic procedures.

Protein Information

Name	ZBTB18
Synonyms	RP58, TAZ1, ZNF238
Function	Transcriptional repressor that plays a role in various developmental processes such as myogenesis and brain development. Plays a key role in myogenesis by directly repressing the expression of ID2 and ID3, 2 inhibitors of skeletal myogenesis. Also involved in controlling cell division of progenitor cells and regulating the survival of postmitotic cortical neurons. Specifically binds the consensus DNA sequence 5'-[AC]ACATCTG[GT][AC]-3' which contains

the E box core, and acts by recruiting chromatin remodeling multiprotein complexes. May also play a role in the organization of chromosomes in the nucleus.

Cellular Location

Nucleus. Note=Associates with condensed chromatin

Tissue Location

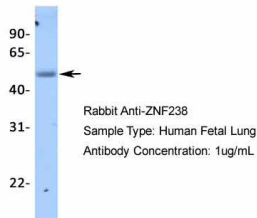
Lymphoid tissues, testis, heart, brain, skeletal muscle, and pancreas and, at much lower level, other tissues

References

Gregory,S.G., (2006) Nature 441 (7091), 315-321 Reconstitution and Storage:For short term use, store at 2-8C up to 1 week. For long term storage, store at -20C in small aliquots to prevent freeze-thaw cycles.

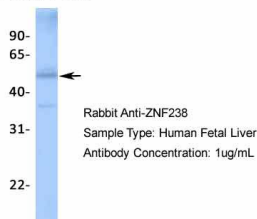
Images

ZNF238



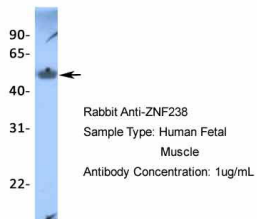
Host: Rabbit
Target Name: ZNF238
Sample Tissue: Human Fetal Lung
Antibody Dilution: 1.0µg/ml

ZNF238



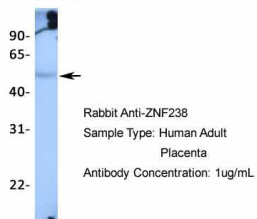
Host: Rabbit
Target Name: ZNF238
Sample Tissue: Human Fetal Liver
Antibody Dilution: 1.0µg/ml

ZNF238



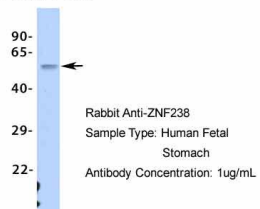
Host: Rabbit
Target Name: ZNF238
Sample Tissue: Human Fetal Muscle
Antibody Dilution: 1.0µg/ml

ZNF238



Host: Rabbit
Target Name: ZNF238
Sample Tissue: Human Adult Placenta
Antibody Dilution: 1.0µg/ml

ZNF238



Host: Rabbit

Target Name: ZNF238

Sample Tissue: Human Fetal Stomach

Antibody Dilution: 1.0 µg/ml

Please note: All products are 'FOR RESEARCH USE ONLY. NOT FOR USE IN DIAGNOSTIC OR THERAPEUTIC PROCEDURES'.