

KCNG1 antibody - N-terminal region

Rabbit Polyclonal Antibody

Catalog # AI10843

Product Information

Application	WB
Primary Accession	Q9UIX4
Other Accession	NM_002237 , NP_002228
Reactivity	Human, Mouse, Rat, Rabbit, Pig, Dog, Horse, Bovine
Predicted	Mouse, Rat, Pig, Chicken, Dog, Horse
Host	Rabbit
Clonality	Polyclonal
Calculated MW	57913

Additional Information

Gene ID	3755
Alias Symbol	K13, KCNG, KV6.1, MGC12878, kH2
Other Names	Potassium voltage-gated channel subfamily G member 1, Voltage-gated potassium channel subunit Kv6.1, kH2, KCNG1
Format	Liquid. Purified antibody supplied in 1x PBS buffer with 0.09% (w/v) sodium azide and 2% sucrose.
Reconstitution & Storage	Add 50 ul of distilled water. Final anti-KCNG1 antibody concentration is 1 mg/ml in PBS buffer with 2% sucrose. For longer periods of storage, store at 20°C. Avoid repeat freeze-thaw cycles.
Precautions	KCNG1 antibody - N-terminal region is for research use only and not for use in diagnostic or therapeutic procedures.

Protein Information

Name	KCNG1 (HGNC:6248)
Function	Regulatory alpha-subunit of the voltage-gated potassium (Kv) channel which, when coassembled with KCNB1 or KCNB2, can modulate their expression and their gating kinetics by acting on deactivation upon repolarization and inactivation during maintained depolarization (PubMed: 19074135). Potassium channel subunit that does not form functional channels by itself (PubMed: 19074135).
Cellular Location	Cell membrane {ECO:0000250 UniProtKB:Q14721}; Multi-pass membrane protein. Note=Colocalizes with KCNB1 at the plasma membrane. {ECO:0000250 UniProtKB:Q14721}

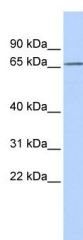
Tissue Location

Expressed in brain and placenta, and at much lower levels in kidney and pancreas (PubMed:9434767)

References

Gutman,G.A., (2005) Pharmacol. Rev. 57 (4), 473-508 Reconstitution and Storage:For short term use, store at 2-8C up to 1 week. For long term storage, store at -20C in small aliquots to prevent freeze-thaw cycles.

Images



WB Suggested Anti-KCNG1 Antibody Titration: 0.2-1 µg/ml
ELISA Titer: 1:62500
Positive Control: MCF7 cell lysate

Please note: All products are 'FOR RESEARCH USE ONLY. NOT FOR USE IN DIAGNOSTIC OR THERAPEUTIC PROCEDURES'.