

# Kcnh8 antibody - C-terminal region

Rabbit Polyclonal Antibody

Catalog # AI10831

## Product Information

---

<b>Application</b>	WB
<b>Primary Accession</b>	<a href="#">P59111</a>
<b>Other Accession</b>	<a href="#">NM_001031811</a> , <a href="#">NP_001026981</a>
<b>Reactivity</b>	Human, Mouse, Rat, Rabbit, Pig, Dog, Horse
<b>Predicted</b>	Human, Mouse, Rat, Rabbit, Pig, Dog
<b>Host</b>	Rabbit
<b>Clonality</b>	Polyclonal
<b>Calculated MW</b>	123277

## Additional Information

---

<b>Gene ID</b>	211468
<b>Alias Symbol</b>	C130090D05Rik, ELK, ELK1, ELK3, Kv12.1
<b>Other Names</b>	Potassium voltage-gated channel subfamily H member 8, Ether-a-go-go-like potassium channel 3, ELK channel 3, ELK3, Voltage-gated potassium channel subunit Kv12.1, Kcnh8
<b>Format</b>	Liquid. Purified antibody supplied in 1x PBS buffer with 0.09% (w/v) sodium azide and 2% sucrose.
<b>Reconstitution &amp; Storage</b>	Add 50 ul of distilled water. Final anti-Kcnh8 antibody concentration is 1 mg/ml in PBS buffer with 2% sucrose. For longer periods of storage, store at 20°C. Avoid repeat freeze-thaw cycles.
<b>Precautions</b>	Kcnh8 antibody - C-terminal region is for research use only and not for use in diagnostic or therapeutic procedures.

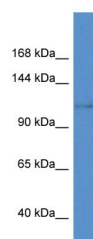
## Protein Information

---

<b>Name</b>	Kcnh8 {ECO:0000312 MGI:MGI:2445160}
<b>Function</b>	Pore-forming (alpha) subunit of a voltage-gated delayed rectifier potassium channel that mediates outward-rectifying potassium currents. Elicits a slowly activating, non-inactivating and slowly deactivation outwards potassium current at depolarizing voltages from -30 mV to +50mV. Shows no obvious change in the activation rate from different holding potentials. Activation is strongly dependent on the pH of the external solution.
<b>Cellular Location</b>	Membrane; Multi-pass membrane protein

## Images

---



WB Suggested Anti-Kcnh8 Antibody Titration: 1.0 µg/ml  
Positive Control: Mouse Heart

Please note: All products are 'FOR RESEARCH USE ONLY. NOT FOR USE IN DIAGNOSTIC OR THERAPEUTIC PROCEDURES'.